

- RHEV 2.2** 3
- 3
- 6
- RHEVM CA 7
- FQDN 7
- 8
- 9
- 10
- 10

RHEV 2.2

— 2016/04/28 09:06

RHEV 2.2

3가 가 .

- 1. RHEV-M CA
- 2. RHEV-M
- 3.

CA

RHEV

- 1. HTTPS RHEV-M /
- 2. RHEV-M - WCF /
- 3. SSH RHEV-M Host

WPF

PC

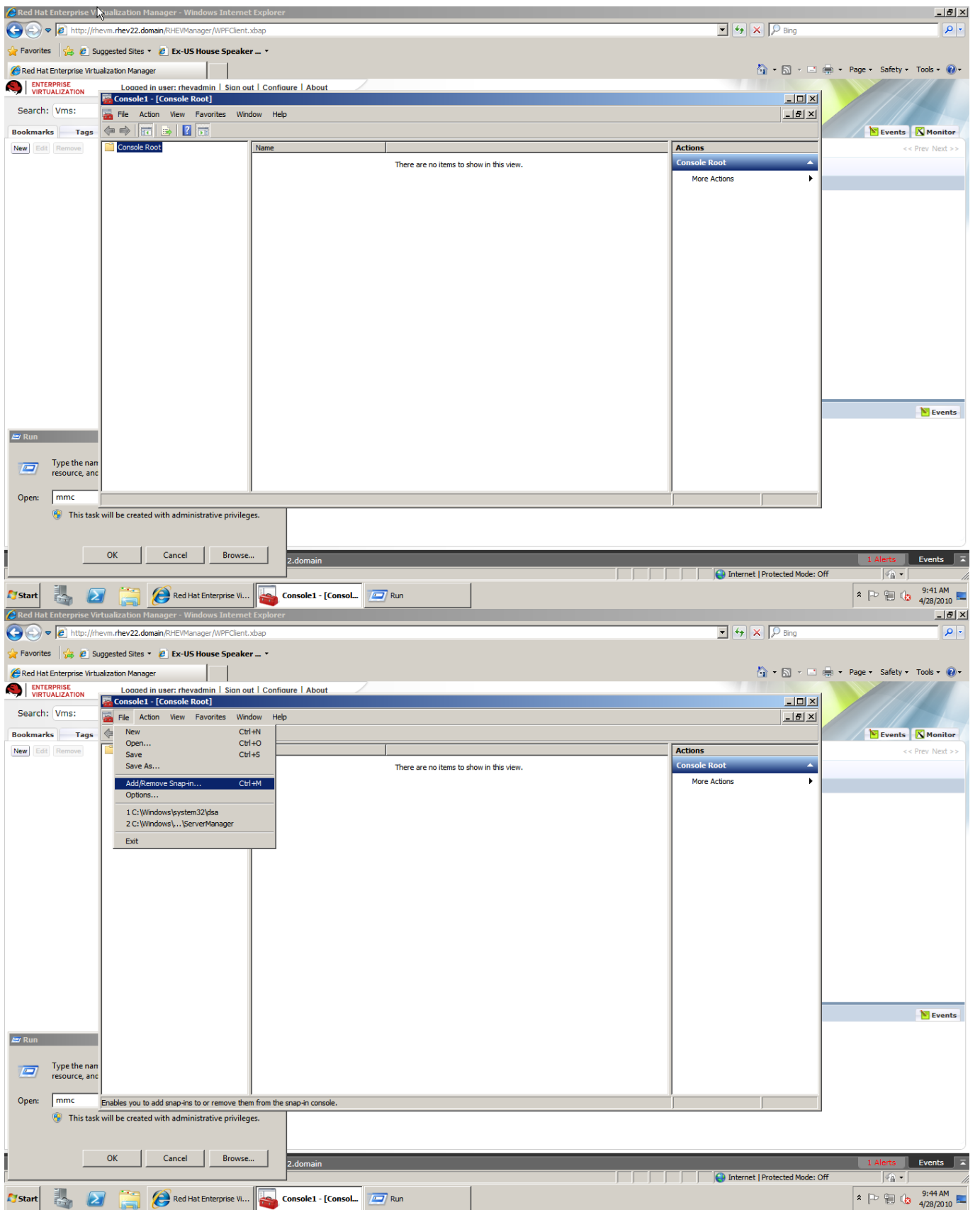
Verisign

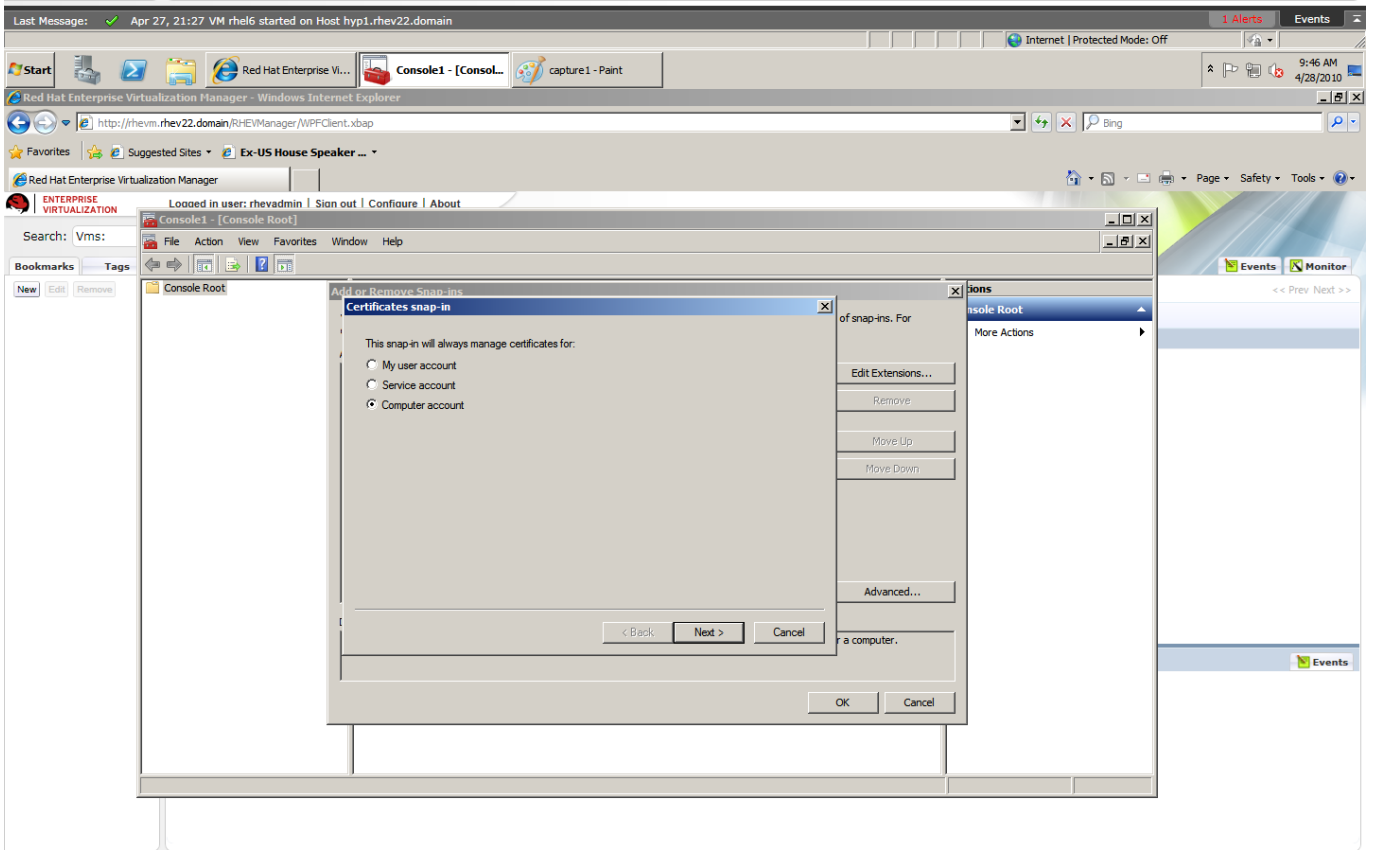
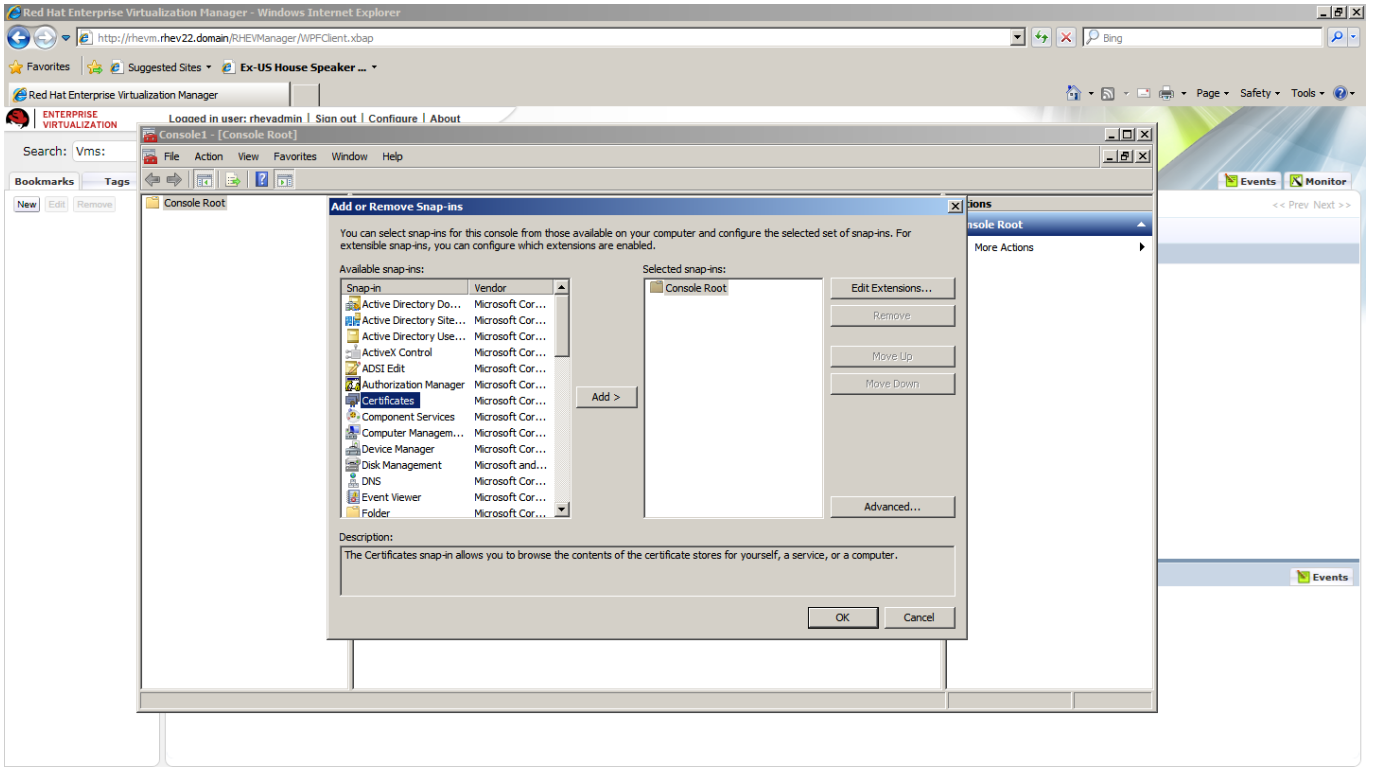
WPF

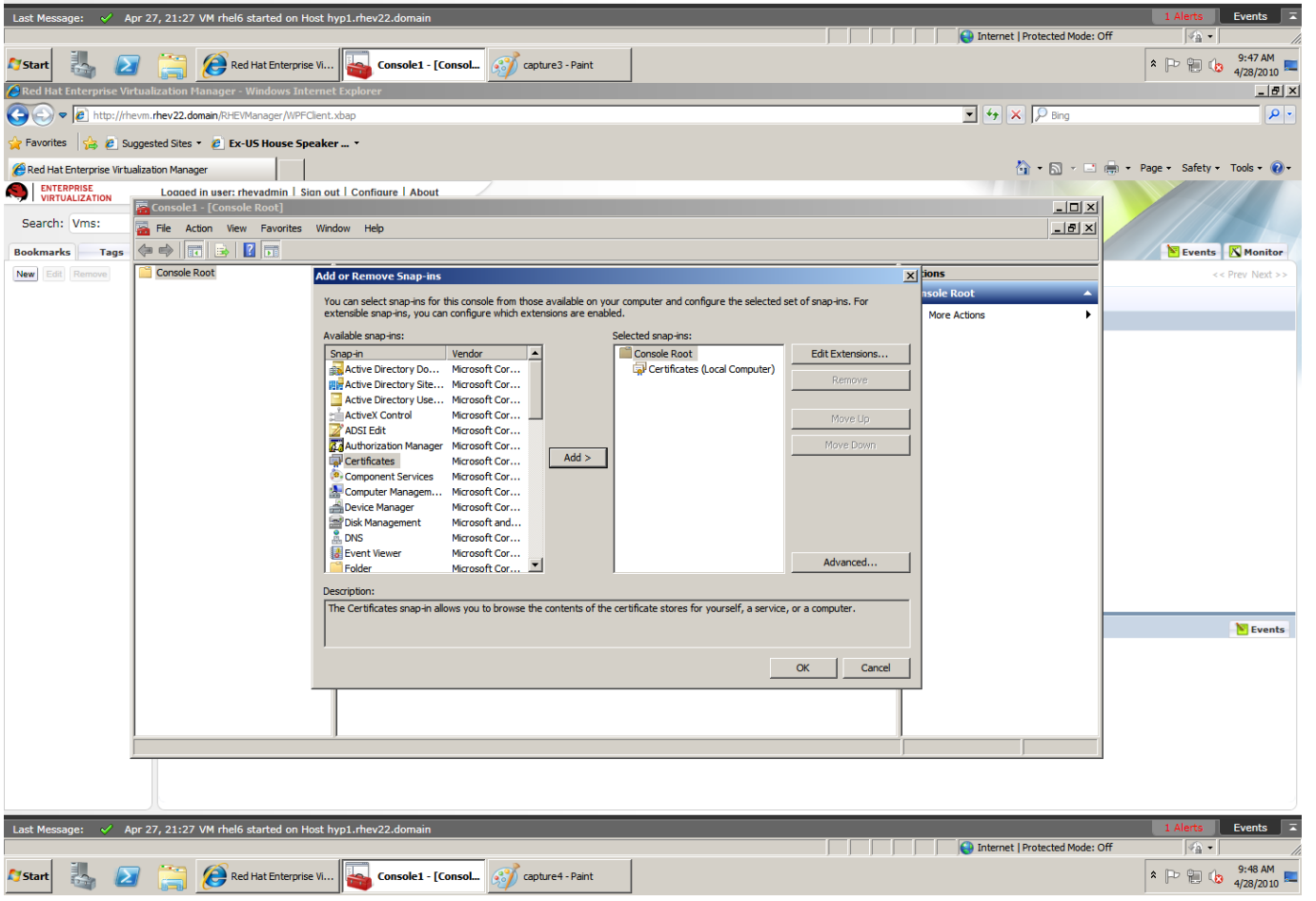
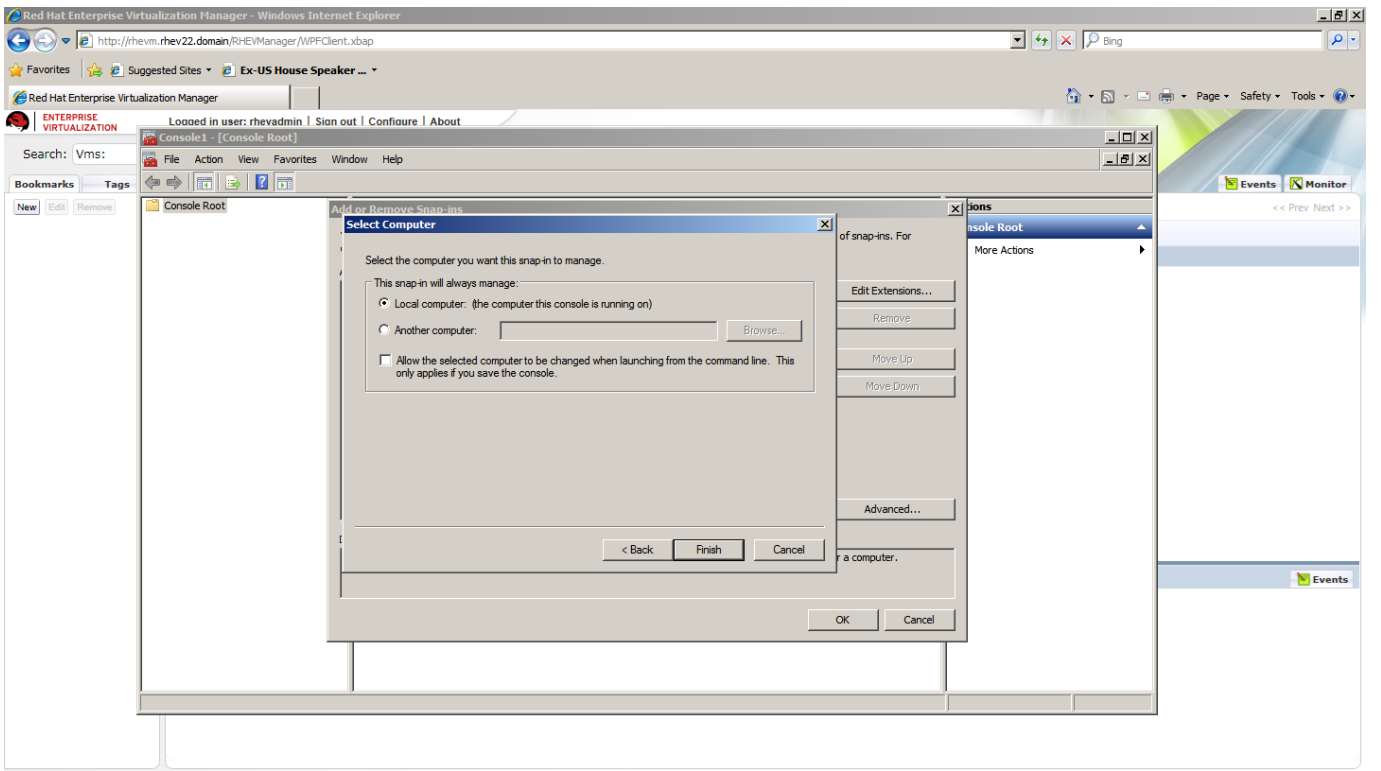
OS

RHEV-M

- 1. > MMC
- 2. MMC 가
- 3. -IN→ 가
- 4. 가 / :
- 5. > 가





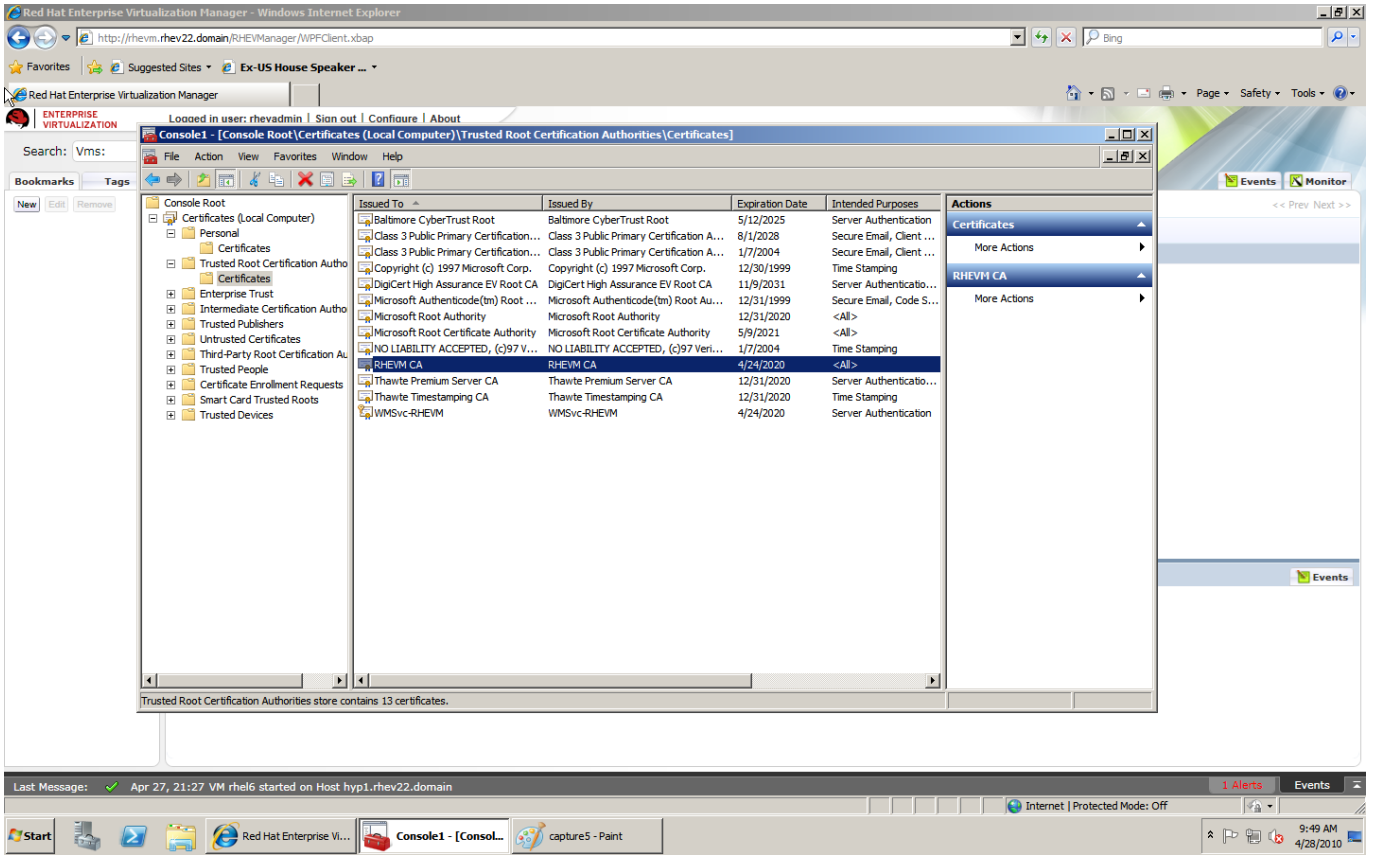


RHEVM CA

RHEVM

RHEV-M

10



FQDN

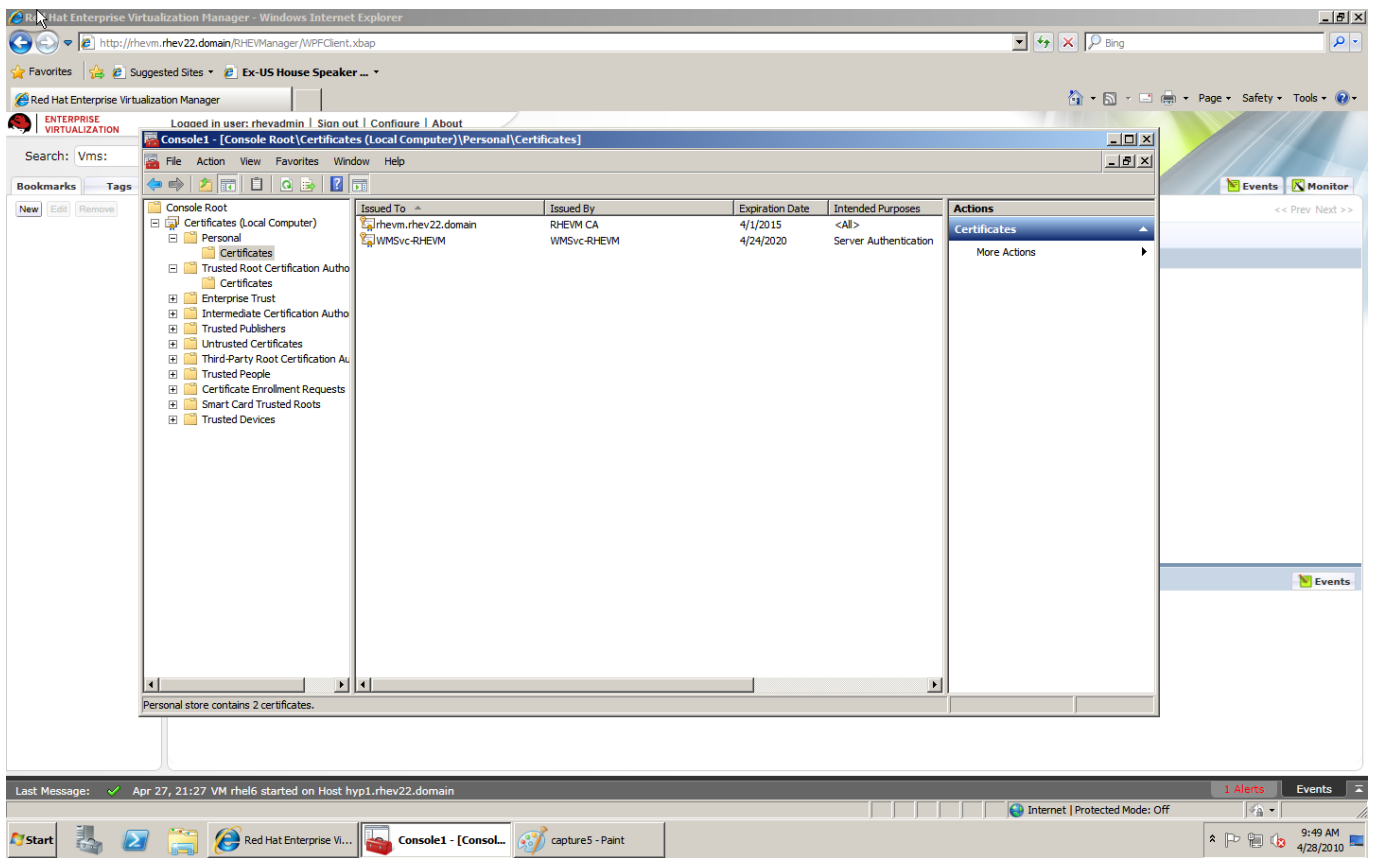
RHEV-M

RHEV-M

. (RHEV-M CA HTTP

5

Last rhev_2.2_
update:
2016/04/28 https://atl.kr/dokuwiki/doku.php/rhev_2.2_%EC%9D%B8%EC%A6%9D%EC%84%9C_%EB%A7%8C%EB%A3%8C_%ED%99%95%EC%9D%B8_%EB%B0%8F_%EA%B0%B1%EC%8B%A0?rev=1461819422
04:57

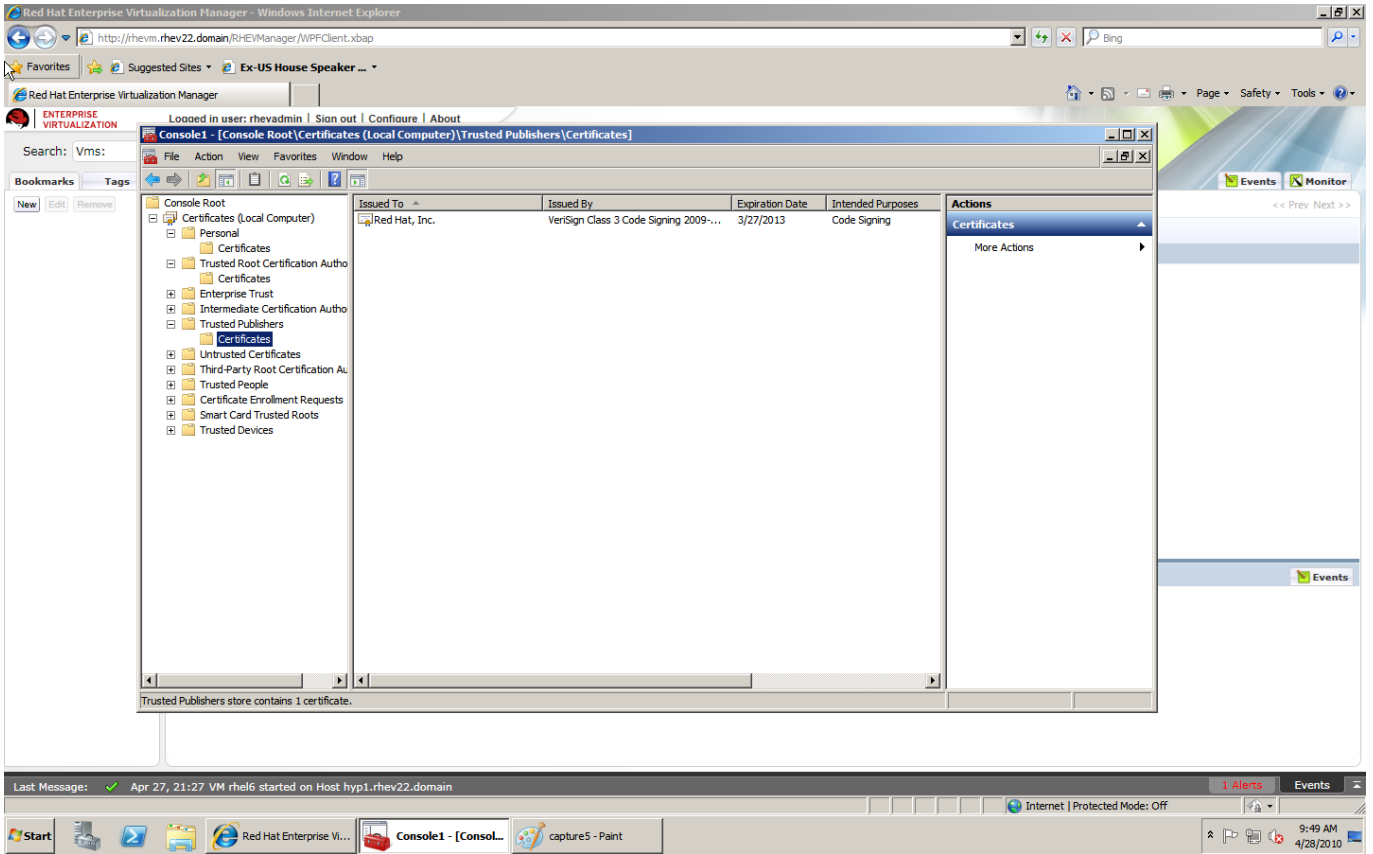


3 CA WPF

RHEV-M

. RHEV 2.x

2013 3 27



RHEV-M

. RHEV-M RHEVM CA
 RHEV-M . ,

: /var/vdsm/ts/certs #

- cacert.pem # ca 10
- vdsmscert.pem # vdsms 5

pem 가 .

Certificate:

Data:

```
Version: 3 (0x2)
Serial Number: 3 (0x3)
Signature Algorithm: sha1WithRSAEncryption
Issuer: C=US, O=rhev22, CN=RHEVM CA
Validity
  Not Before: Apr 26 21:02:52 2010 GMT
  Not After : Apr 27 04:02:53 2015 GMT
Subject: O=rhev22, CN=192.168.0.141
Subject Public Key Info:
```

/var/vdsm/ts/keys #

- vdsmkey.pem

(!) 2.1 Inc 11 2.2
2.1 2010 RHEV-M
(!),
가) , Inc RHEV 2.2.4 가) RHEVM CA (RHEVM CA 2.2.4 가)

- [rhev-ca.cer.zip](#)
- [redhatinc.cer.zip](#)

- <https://access.redhat.com/solutions/1528513>

From: <https://at1.kr/dokuwiki/> - AllThatLinux!
Permanent link: https://at1.kr/dokuwiki/doku.php/rhev_2.2_%EC%9D%B8%EC%A6%9D%EC%84%9C_%EB%A7%8C%EB%A3%8C_%ED%99%95%EC%9D%B8_%EB%B0%8F_%EA%B0%B1%EC%8B%A0?rev=1461819422
Last update: 2016/04/28 04:57

