





# RHEV 2.2

— 2016/04/28 09:06

RHEV 2.2 3가 가 .

- 1. RHEV-M CA
- 2. RHEV-M
- 3.

CA RHEV .

- 1. HTTPS RHEV-M /
- 2. RHEV-M - WCF /
- 3. SSH RHEV-M Host

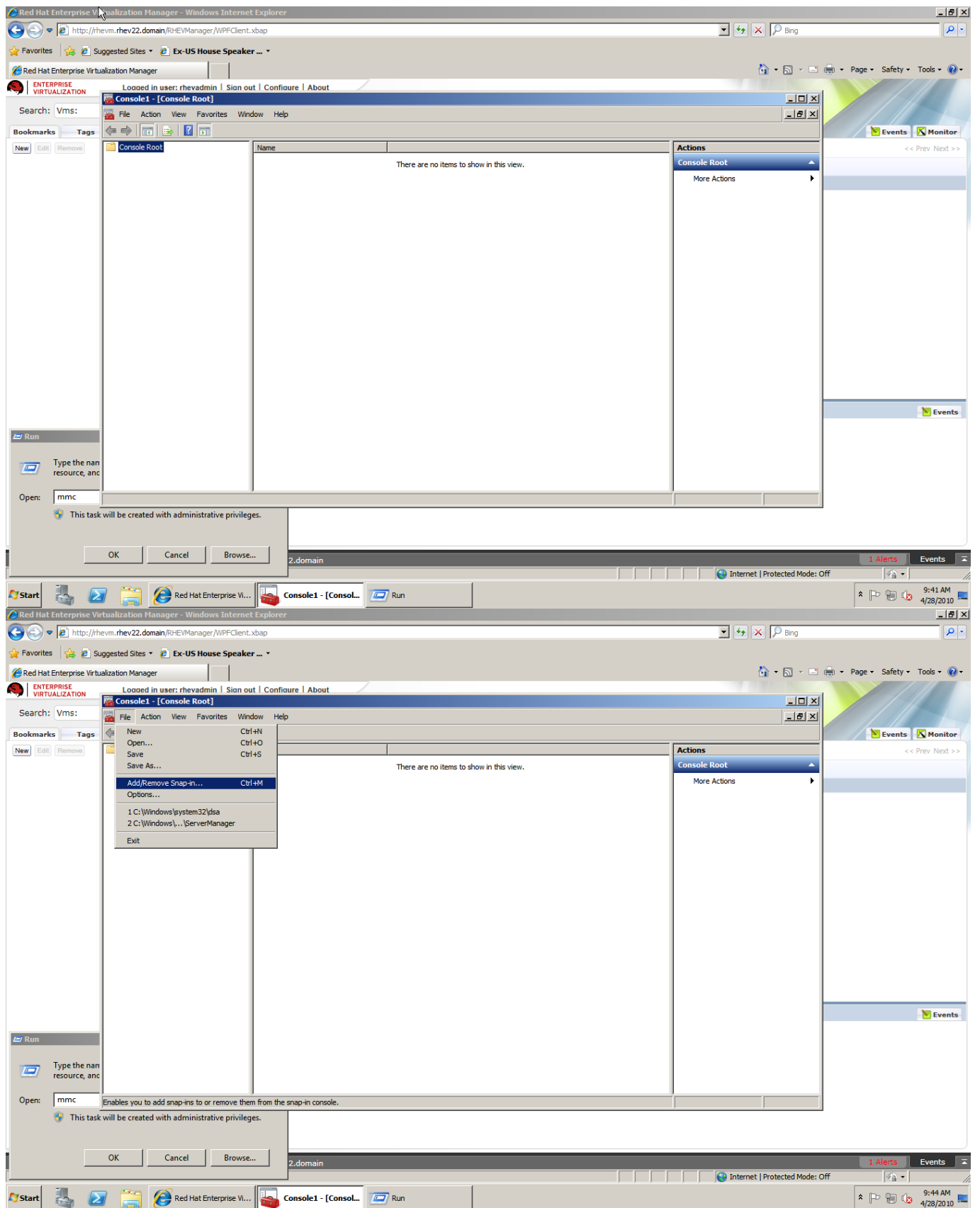
WPF . WPF  
PC Verisign .

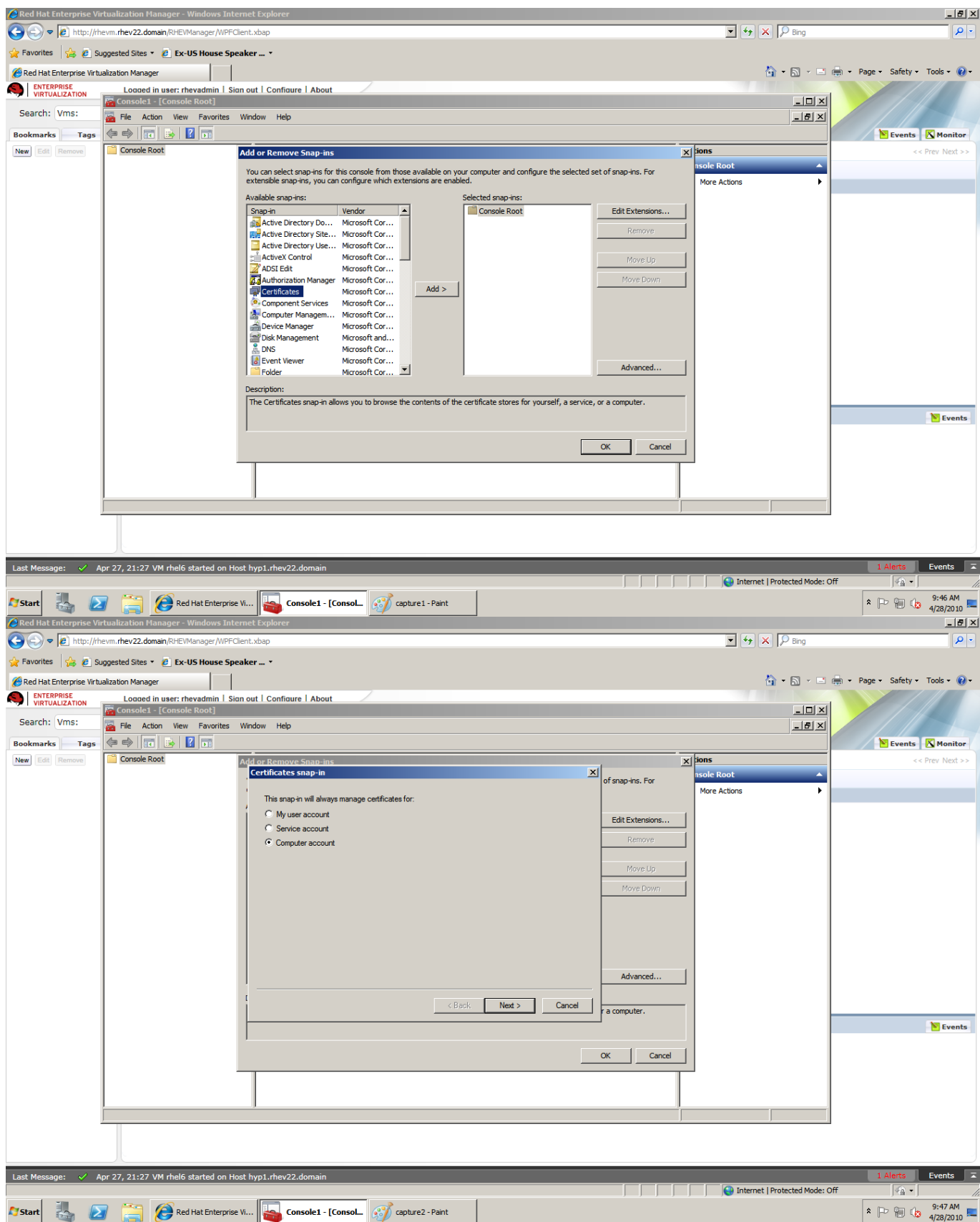
OS

RHEV-M .

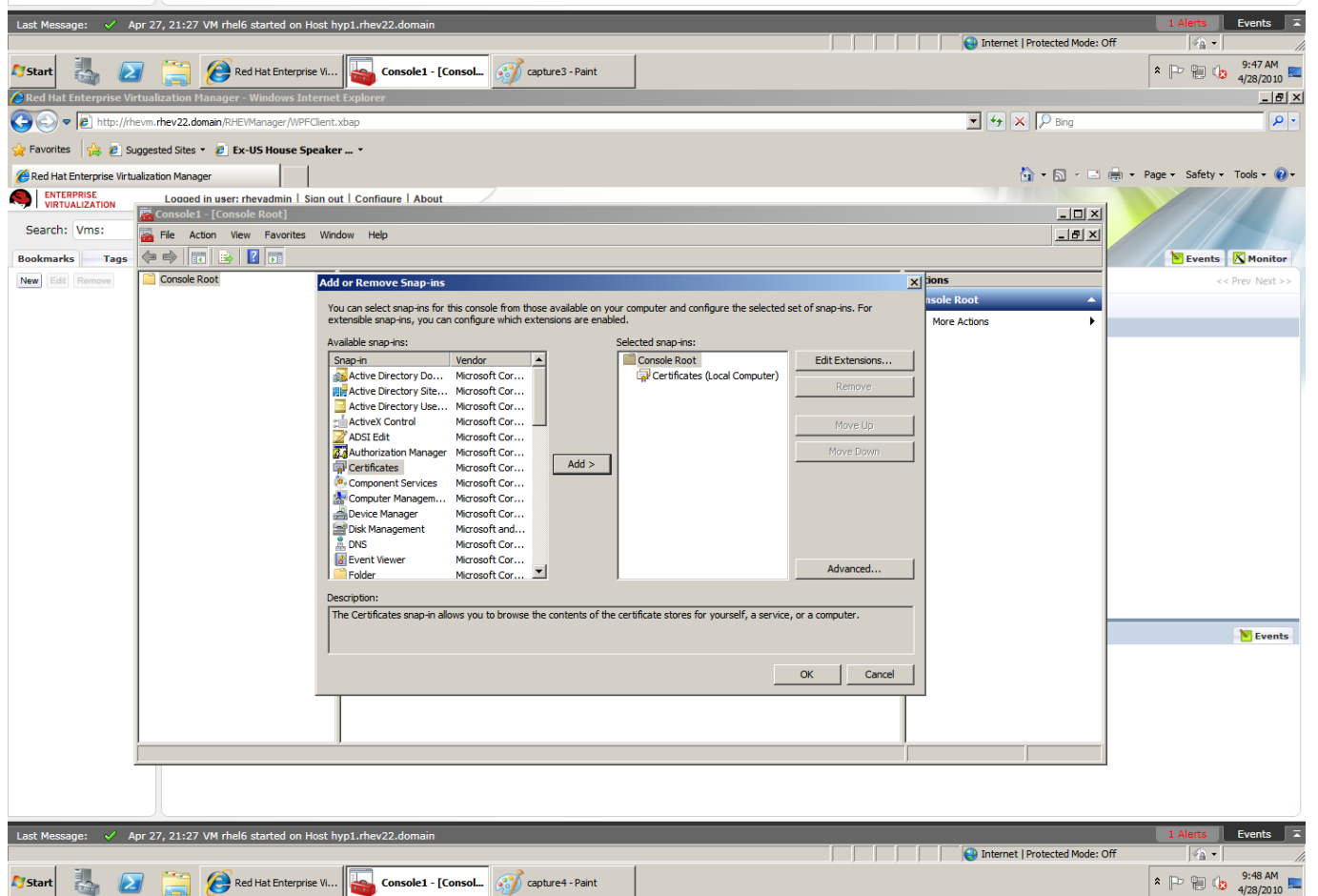
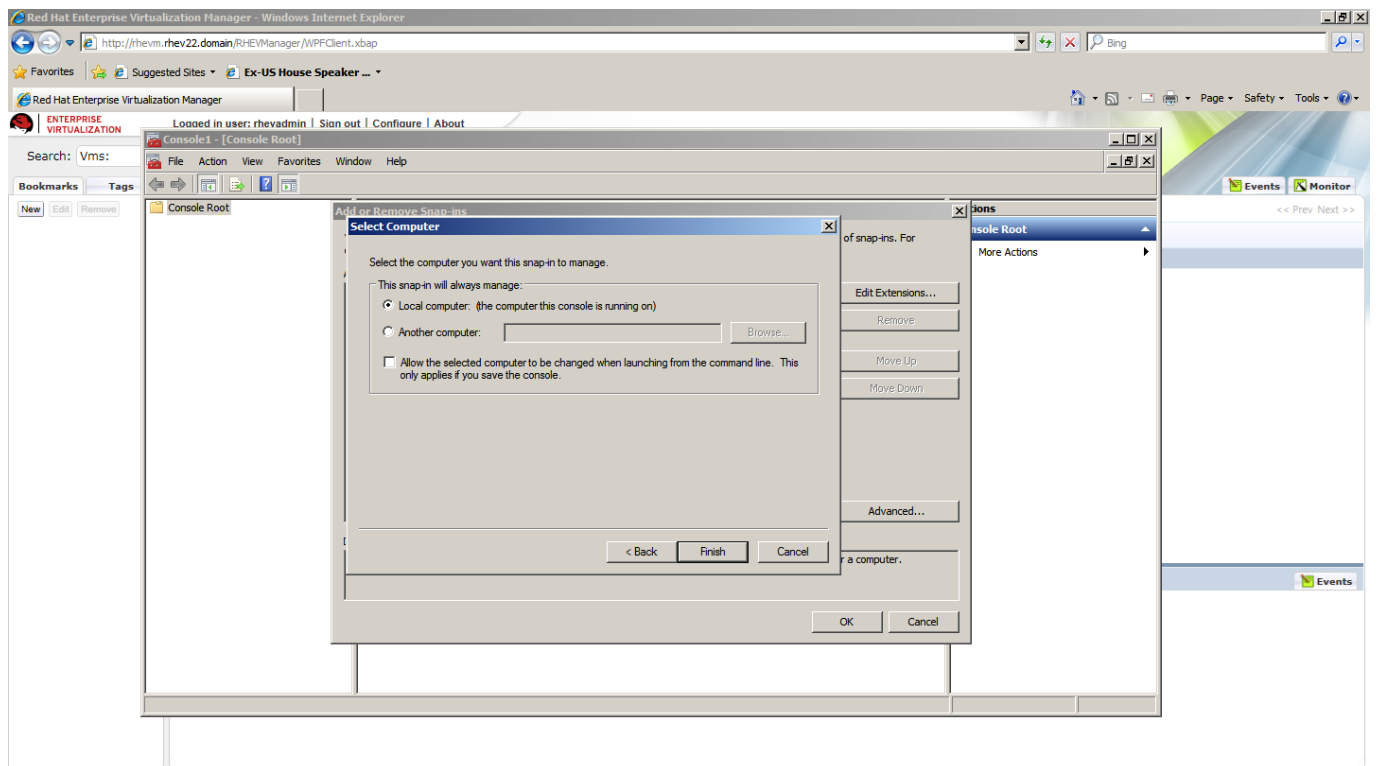
- 1. > MMC
- 2. MMC 가
- 3. -IN→ 가
- 4. 가 / :
- 5. > 가

Last rhev\_2.2\_  
update: -  
2016/04/28 - https://atli.kr/dokuwiki/doku.php/rhev\_2.2\_%EC%9D%B8%EC%A6%9D%EC%84%9C\_%EB%A7%8C%EB%A3%8C\_%ED%99%95%EC%9D%B8\_%EB%B0%8F\_%EA%B0%B1%EC%8B%A0?rev=1461808797  
01:59 - -





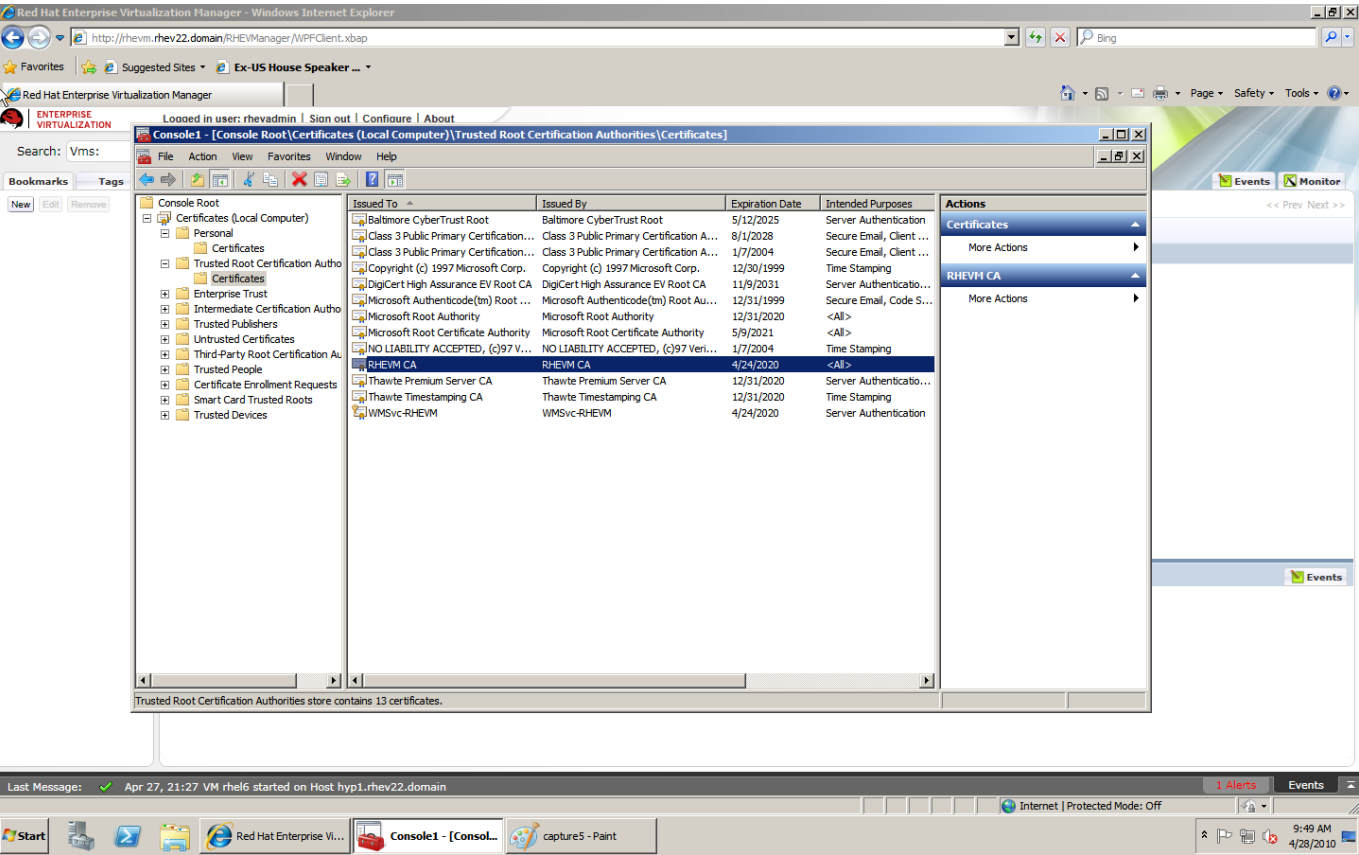
Last rhev\_2.2\_  
update: -  
2016/04/28 - https://atli.kr/dokuwiki/doku.php/rhev\_2.2\_%EC%9D%B8%EC%A6%9D%EC%84%9C\_%EB%A7%8C%EB%A3%8C\_%ED%99%95%EC%9D%B8\_%EB%B0%8F\_%EA%B0%B1%EC%8B%A0?rev=1461808797  
01:59 - -



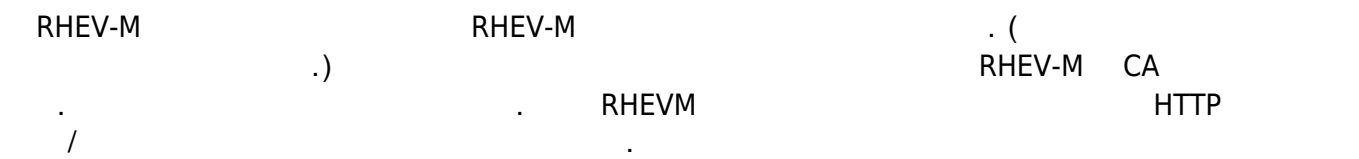
RHEVM CA



10



FQDN



5

Red Hat Enterprise Virtualization Manager - Windows Internet Explorer

http://rhev.rhev22.domain/RHVMClient.xbp

Enterprise Virtualization Manager

Loaded in user: rhvadmin | Sign out | Configure | About

Console1 - [Console Root(Certificates (Local Computer))Personal(Certificates)]

File Action View Favorites Window Help

Search: Vms:

Bookmarks Tags

New Edit Remove

Console Root

- Certificates (Local Computer)
  - Personal
    - Certificates
      - Trusted Root Certification Autho
        - Certificates
          - Enterprise Trust
          - Intermediate Certification Autho
          - Trusted Publishers
          - Untrusted Certificates
          - Third-Party Root Certification Au
          - Trusted People
          - Certificate Enrollment Requests
          - Smart Card Trusted Roots
          - Trusted Devices

Issued To	Issued By	Expiration Date	Intended Purposes
rhev.rhev22.domain	RHEVM CA	4/1/2015	<All>
WMSvc-RHEVM	WMSvc-RHEVM	4/24/2020	Server Authentication

Actions

Certificates

More Actions

Personal store contains 2 certificates.

Last Message: Apr 27, 21:27 VM rhel6 started on Host hyp1.rhev22.domain

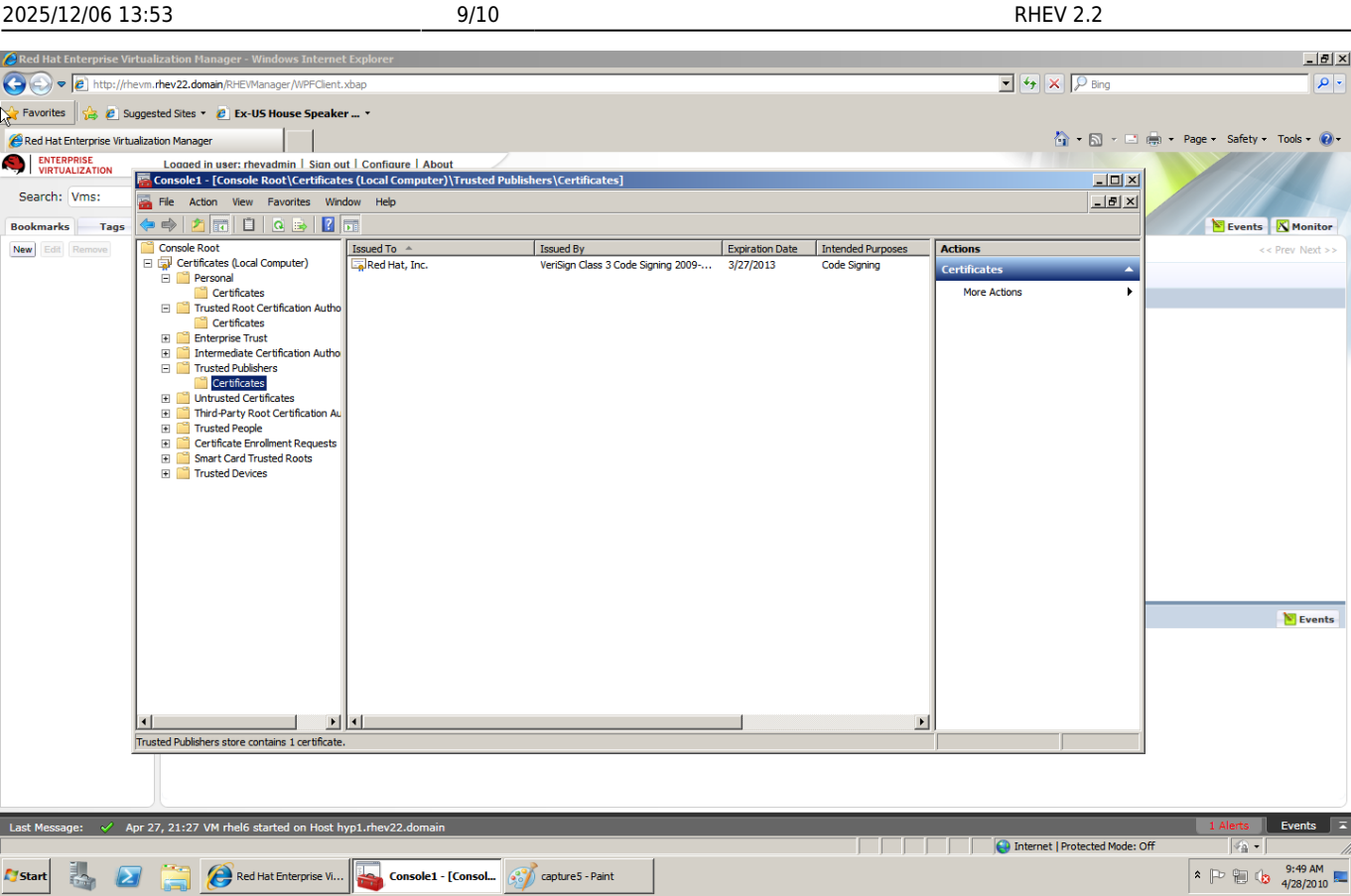
Internet | Protected Mode: Off

9:49 AM 4/28/2010

---

<https://atl.kr/dokuwiki/>
Printed on 2025/12/06 13:53





RHEV-M

. RHEV-M RHEVM CA  
RHEV-M . ,

: /var/vdsm/ts/certs #

- cacert.pem # ca 10
- vdsmcert.pem # vdsmd 5

pem 가 .

```
Certificate:
Data:
  Version: 3 (0x2)
  Serial Number: 3 (0x3)
  Signature Algorithm: sha1WithRSAEncryption
  Issuer: C=US, O=rhev22, CN=RHEVM CA
  Validity
    Not Before: Apr 26 21:02:52 2010 GMT
    Not After : Apr 27 04:02:53 2015 GMT
  Subject: O=rhev22, CN=192.168.0.141
  Subject Public Key Info:
```

/var/vdsm/ts/keys #

- vdsmkey.pem

(!) 2.1 Inc 11 2.2  
2.1 2010 RHEV-M  
(!),  
가) , Inc RHEV 2.2.4 RHEVM CA 2.2.4  
가 : 가  
.

- [rhev-ca.cer.zip](#)
- [redhatinc.cer.zip](#)

From:  
<https://atl.kr/dokuwiki/> - AllThatLinux!  
Permanent link:  
[https://atl.kr/dokuwiki/doku.php/rhev\\_2.2\\_%EC%9D%B8%EC%A6%9D%EC%84%9C\\_%EB%A7%8C%EB%A3%8C\\_%ED%99%95%EC%9D%B8\\_%EB%B0%8F\\_%EA%B0%B1%EC%8B%A0?rev=1461808797](https://atl.kr/dokuwiki/doku.php/rhev_2.2_%EC%9D%B8%EC%A6%9D%EC%84%9C_%EB%A7%8C%EB%A3%8C_%ED%99%95%EC%9D%B8_%EB%B0%8F_%EA%B0%B1%EC%8B%A0?rev=1461808797)  
Last update: 2016/04/28 01:59

