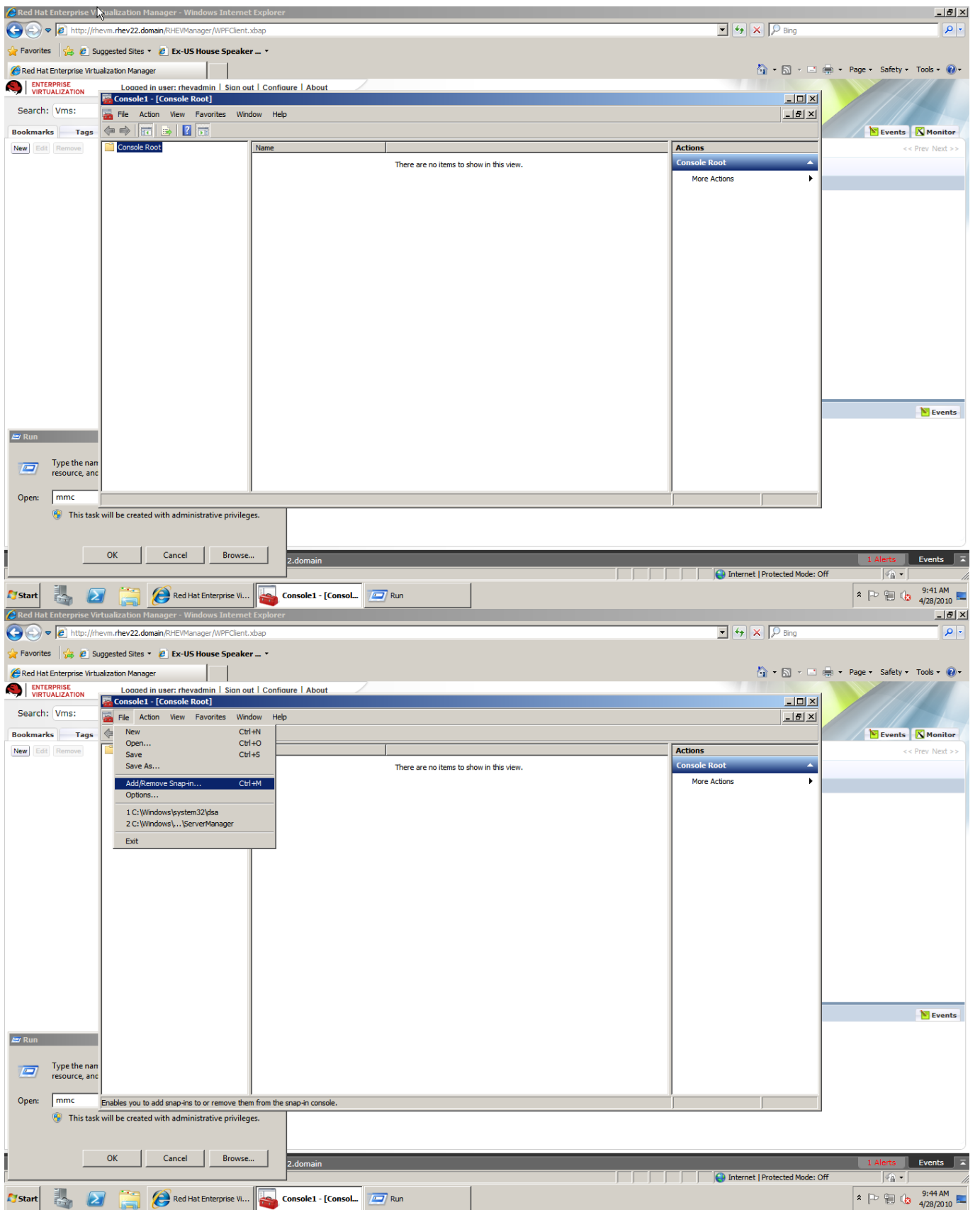


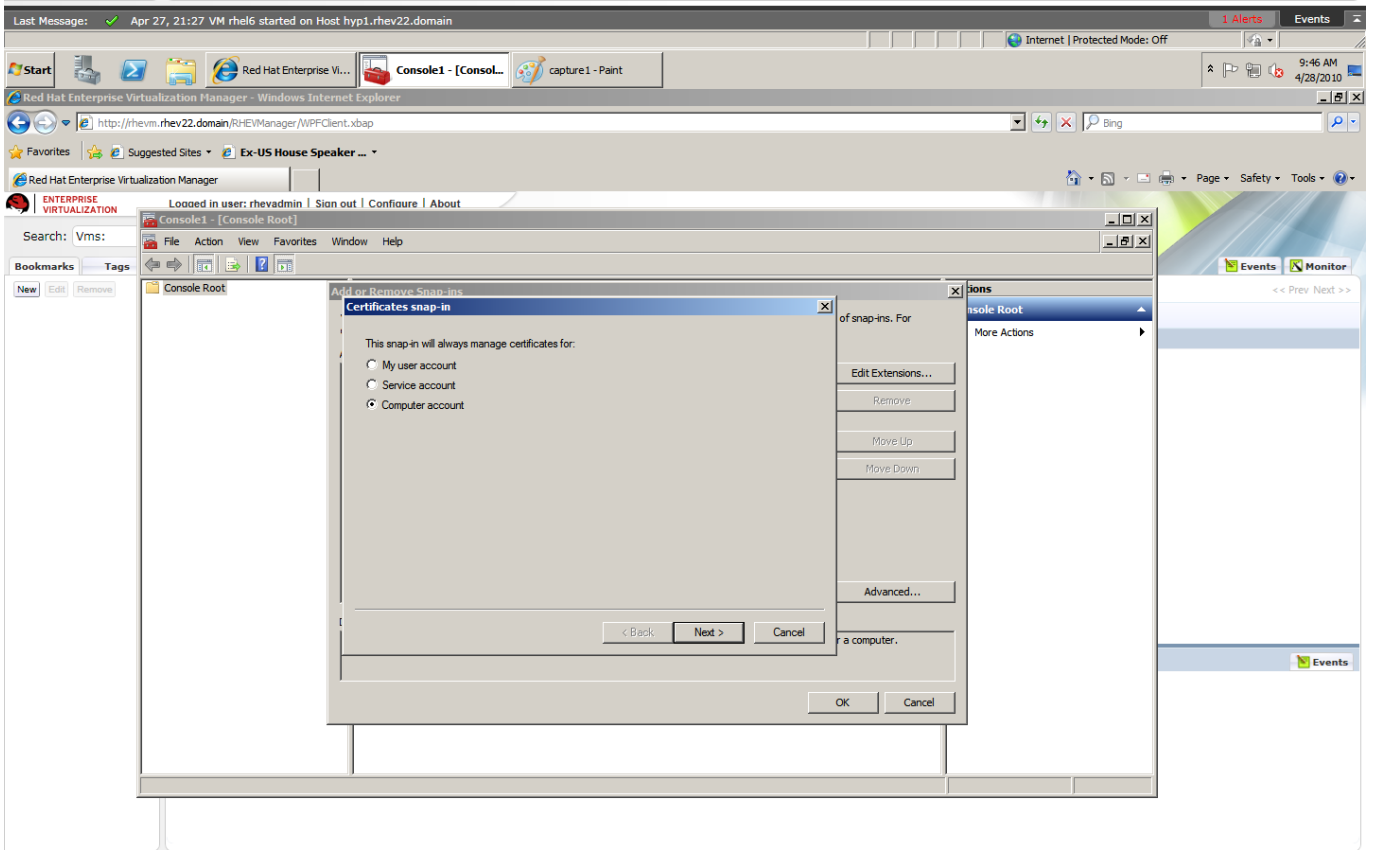
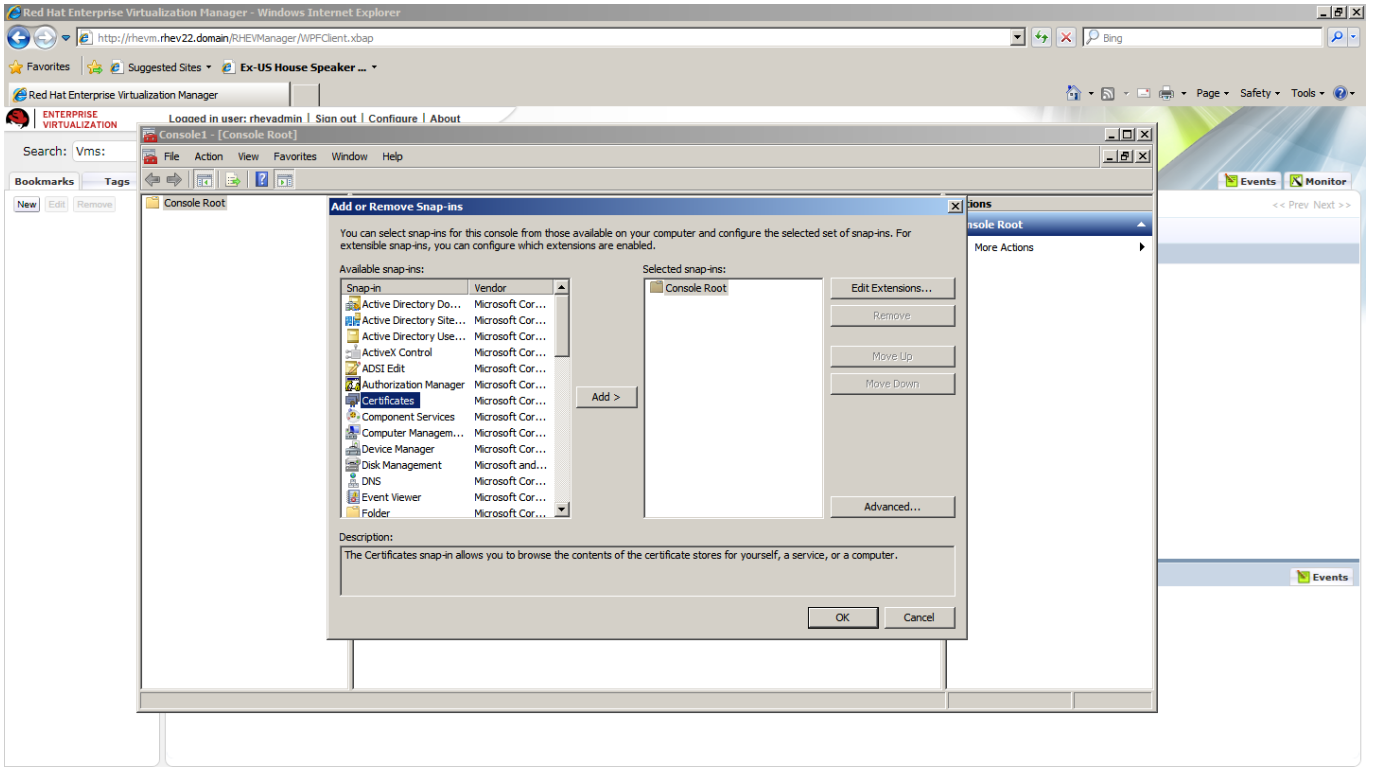
- RHEV 2.2** ..... 3
- ..... 3
- ..... 6
- RHEVM CA ..... 7
- FQDN ..... 7
- ..... 8
- ..... 9
- ..... 9

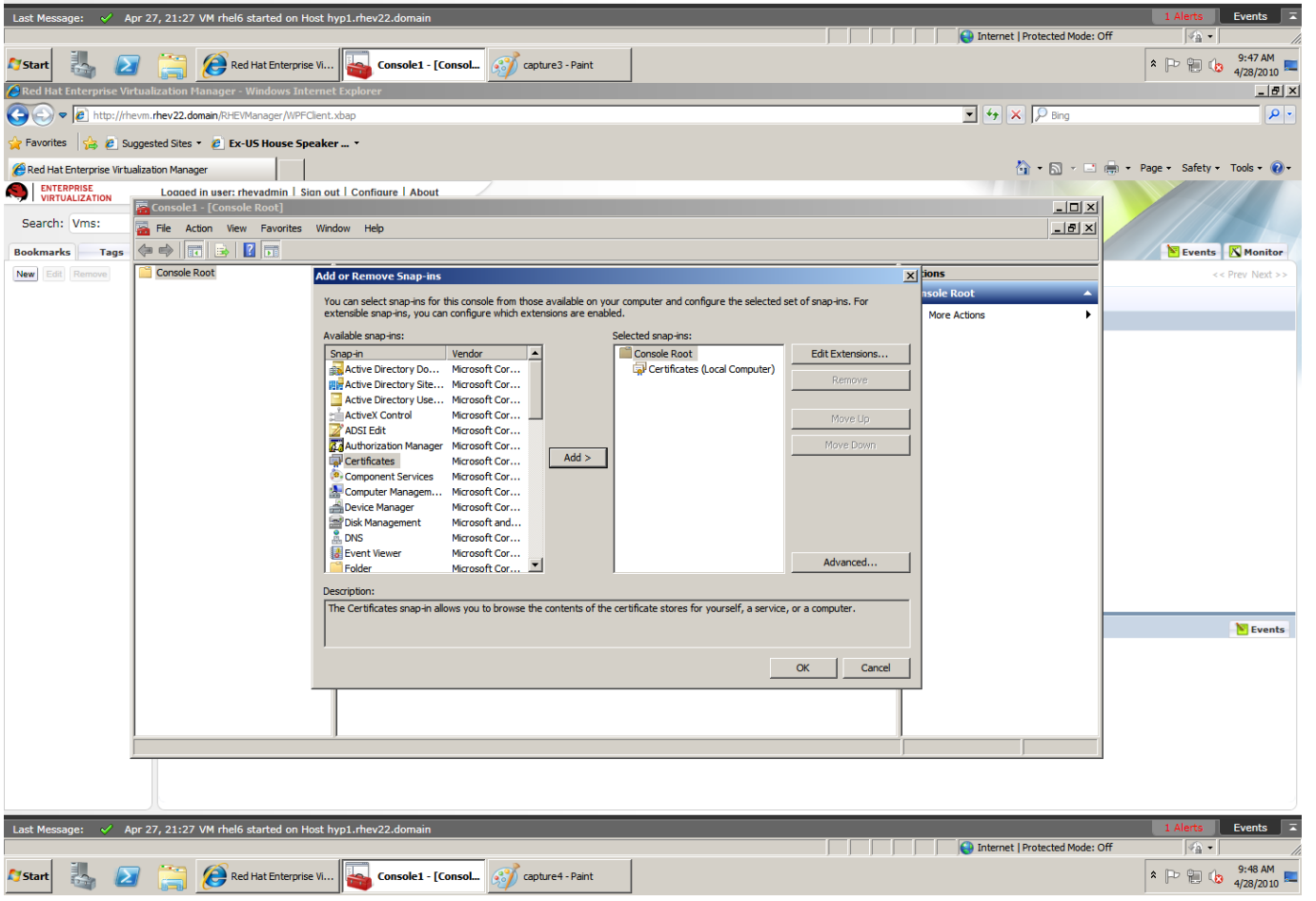
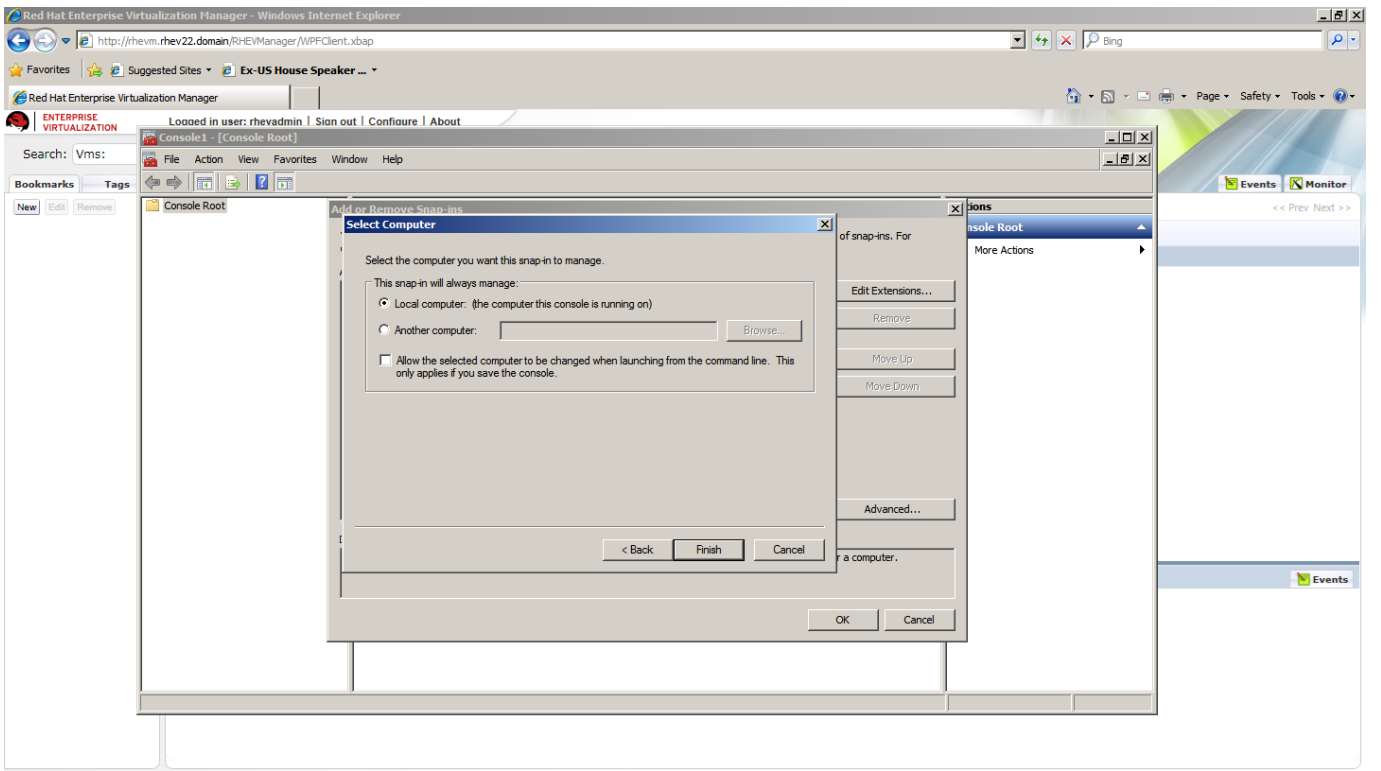




Last update: 2016/04/28 01:50  
rhev\_2.2\_ - - https://at1.kr/dokuwiki/doku.php/rhev\_2.2\_%EC%9D%B8%EC%A6%9D%EC%84%9C\_%EB%A7%8C%EB%A3%8C\_%ED%99%95%EC%9D%B8\_%EB%B0%8F\_%EA%B0%B1%EC%8B%A0?rev=1461808220





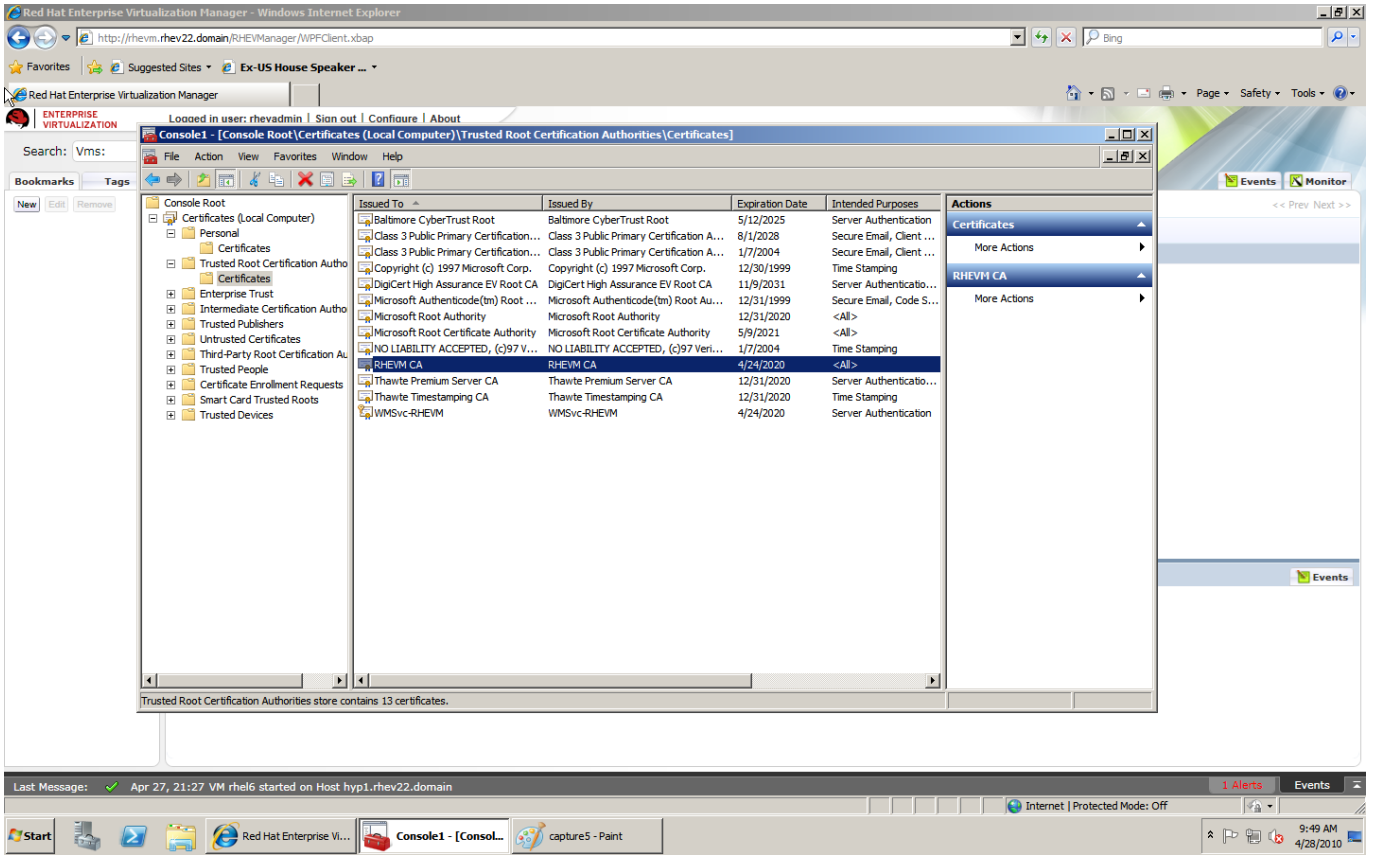


# RHEVM CA

RHEVM

RHEV-M

10



# FQDN

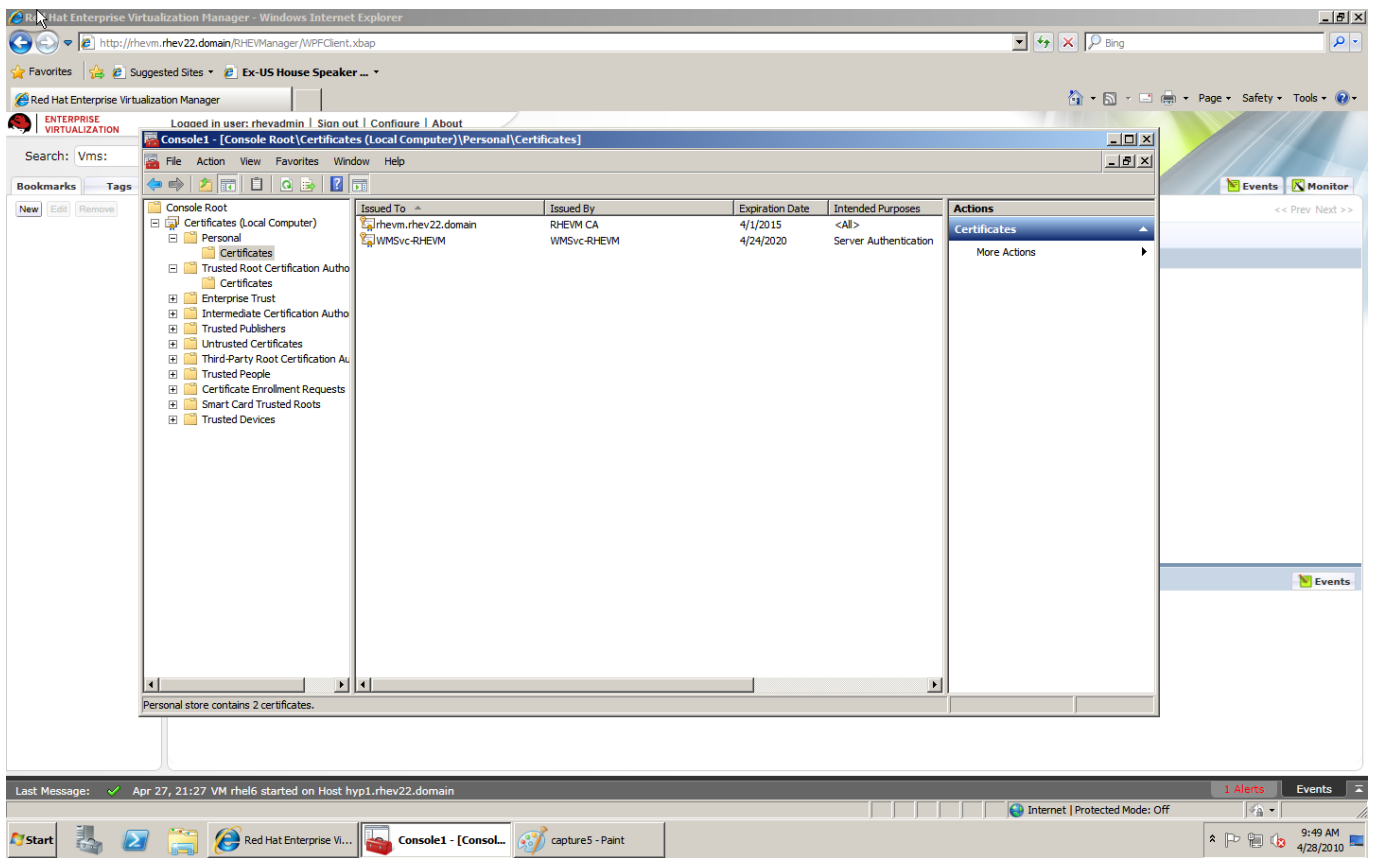
RHEV-M

RHEV-M

. ( RHEV-M CA HTTP

5

Last rhev\_2.2\_  
update: - -  
2016/04/28 - - https://atl.kr/dokuwiki/doku.php/rhev\_2.2\_%EC%9D%B8%EC%A6%9D%EC%84%9C\_%EB%A7%8C%EB%A3%8C\_%ED%99%95%EC%9D%B8\_%EB%B0%8F\_%EA%B0%B1%EC%8B%A0?rev=1461808220  
01:50 - -



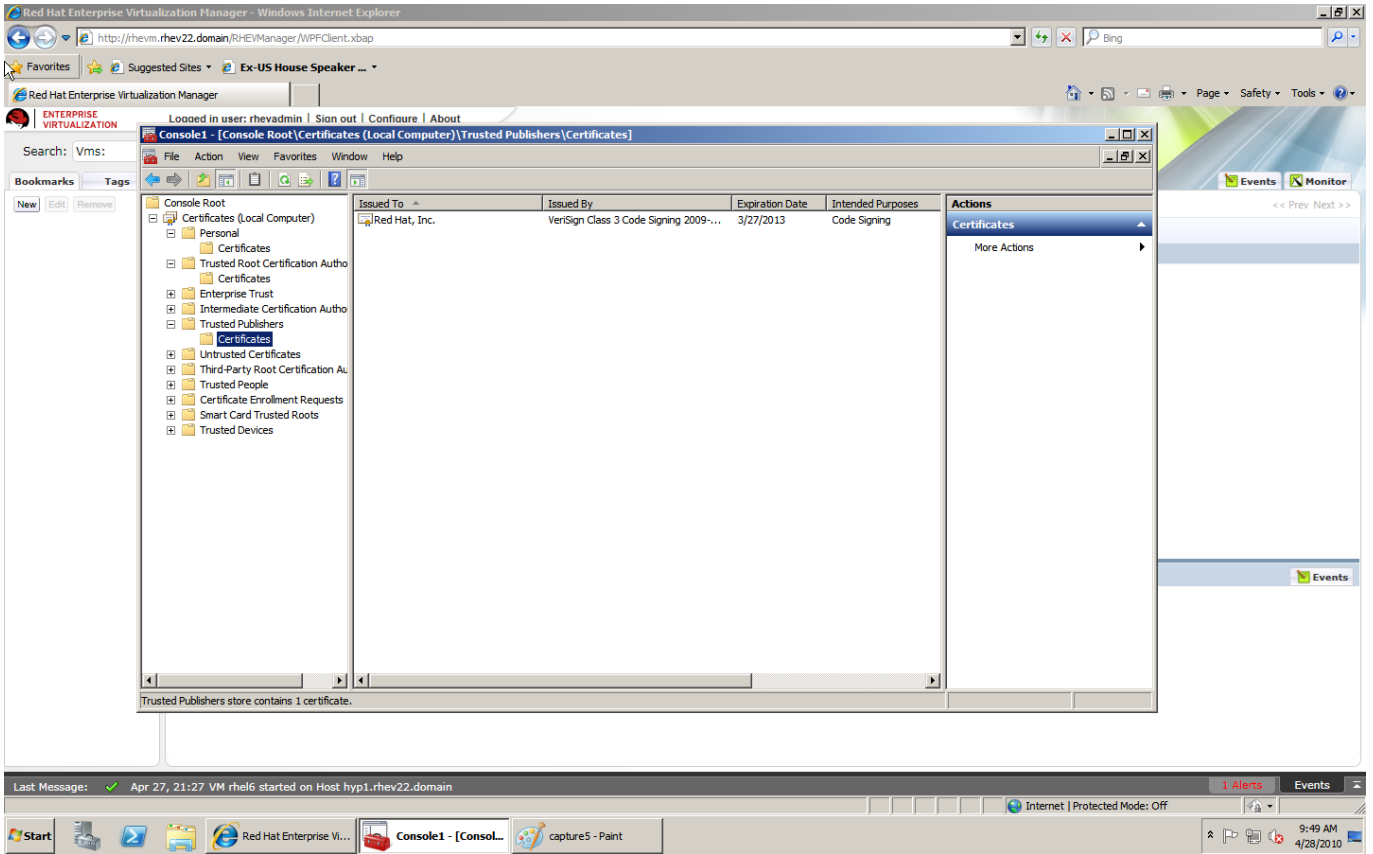
3 CA WPF

RHEV-M

. RHEV 2.x

2013 3 27





### RHEV-M

. RHEV-M RHEVM CA  
 RHEV-M . ,

: /var/vdsm/ts/certs #

- cacert.pem
- vdsmscert.pem

/var/vdsm/ts/keys #

- vmdskey.pem

(!) 2.1 Inc 11 2.2  
 2.1 2010 RHEV-M  
 가 (!),  
 가 , RHEV 가 RHEVM CA  
 , Inc RHEV 2.2.4 : 2.2.4  
 가 가

- [rhev-ca.cer.zip](#)
- [redhatinc.cer.zip](#)

Last rhev\_2.2\_  
update: - -  
2016/04/28 - - [https://at1.kr/dokuwiki/doku.php/rhev\\_2.2\\_%EC%9D%B8%EC%A6%9D%EC%84%9C\\_%EB%A7%8C%EB%A3%8C\\_%ED%99%95%EC%9D%B8\\_%EB%B0%8F\\_%EA%B0%B1%EC%8B%A0?rev=1461808220](https://at1.kr/dokuwiki/doku.php/rhev_2.2_%EC%9D%B8%EC%A6%9D%EC%84%9C_%EB%A7%8C%EB%A3%8C_%ED%99%95%EC%9D%B8_%EB%B0%8F_%EA%B0%B1%EC%8B%A0?rev=1461808220)  
01:50 - -

---

From:  
<https://at1.kr/dokuwiki/> - **AllThatLinux!**

Permanent link:  
[https://at1.kr/dokuwiki/doku.php/rhev\\_2.2\\_%EC%9D%B8%EC%A6%9D%EC%84%9C\\_%EB%A7%8C%EB%A3%8C\\_%ED%99%95%EC%9D%B8\\_%EB%B0%8F\\_%EA%B0%B1%EC%8B%A0?rev=1461808220](https://at1.kr/dokuwiki/doku.php/rhev_2.2_%EC%9D%B8%EC%A6%9D%EC%84%9C_%EB%A7%8C%EB%A3%8C_%ED%99%95%EC%9D%B8_%EB%B0%8F_%EA%B0%B1%EC%8B%A0?rev=1461808220)

Last update: **2016/04/28 01:50**

