

RHEV 2.2

RHEVM CA

FQDN

-

..... 3

..... 3

..... 6

..... 7

..... 7

..... 8

..... 9

..... 10

..... 10

RHEV 2.2

— 2016/04/28 09:06

RHEV 2.2 3가 가 .

- 1. RHEV-M CA
- 2. RHEV-M
- 3.

CA RHEV .

- 1. HTTPS RHEV-M /
- 2. RHEV-M - WCF /
- 3. SSH RHEV-M Host

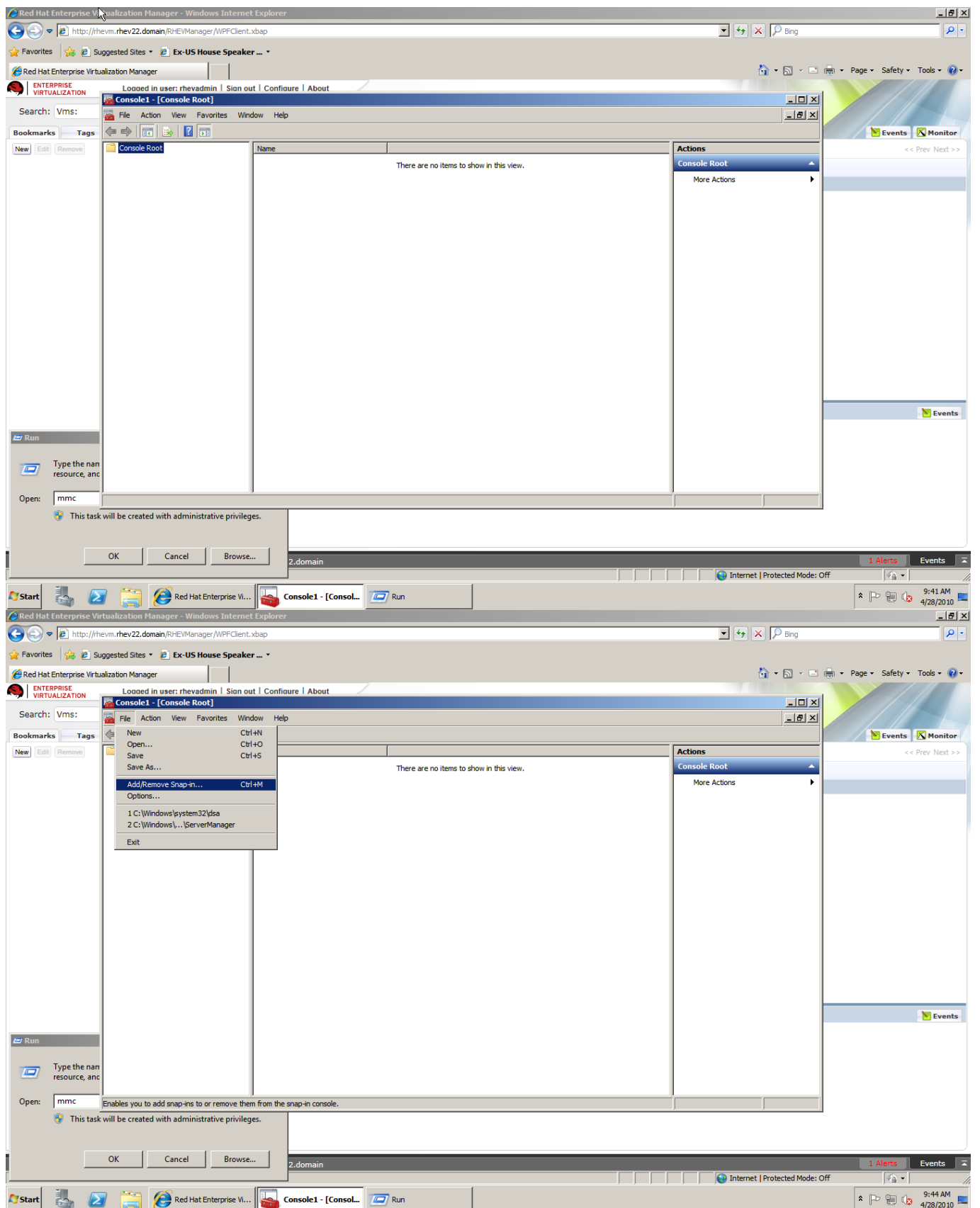
WPF . WPF
PC Verisign .

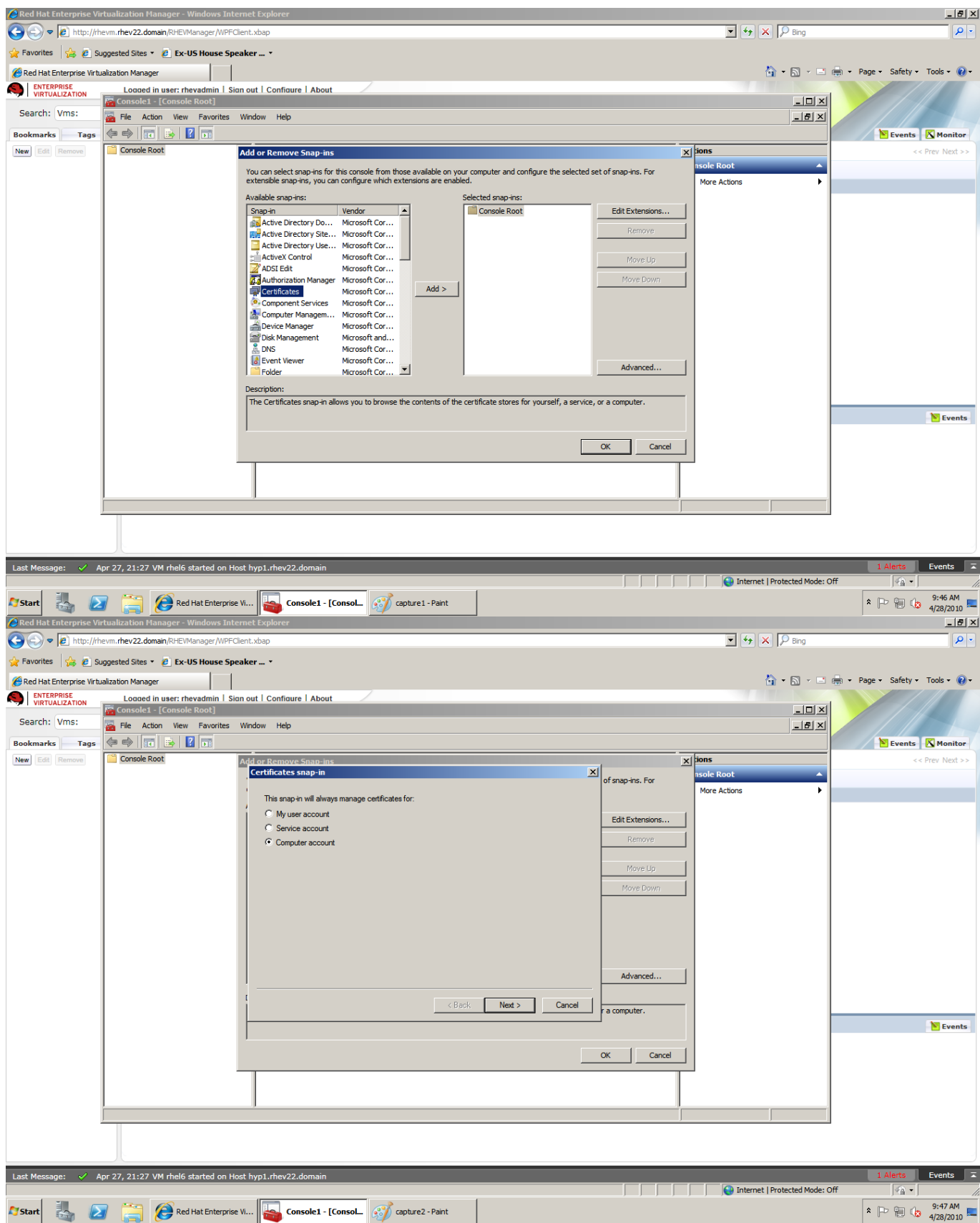
OS

RHEV-M .

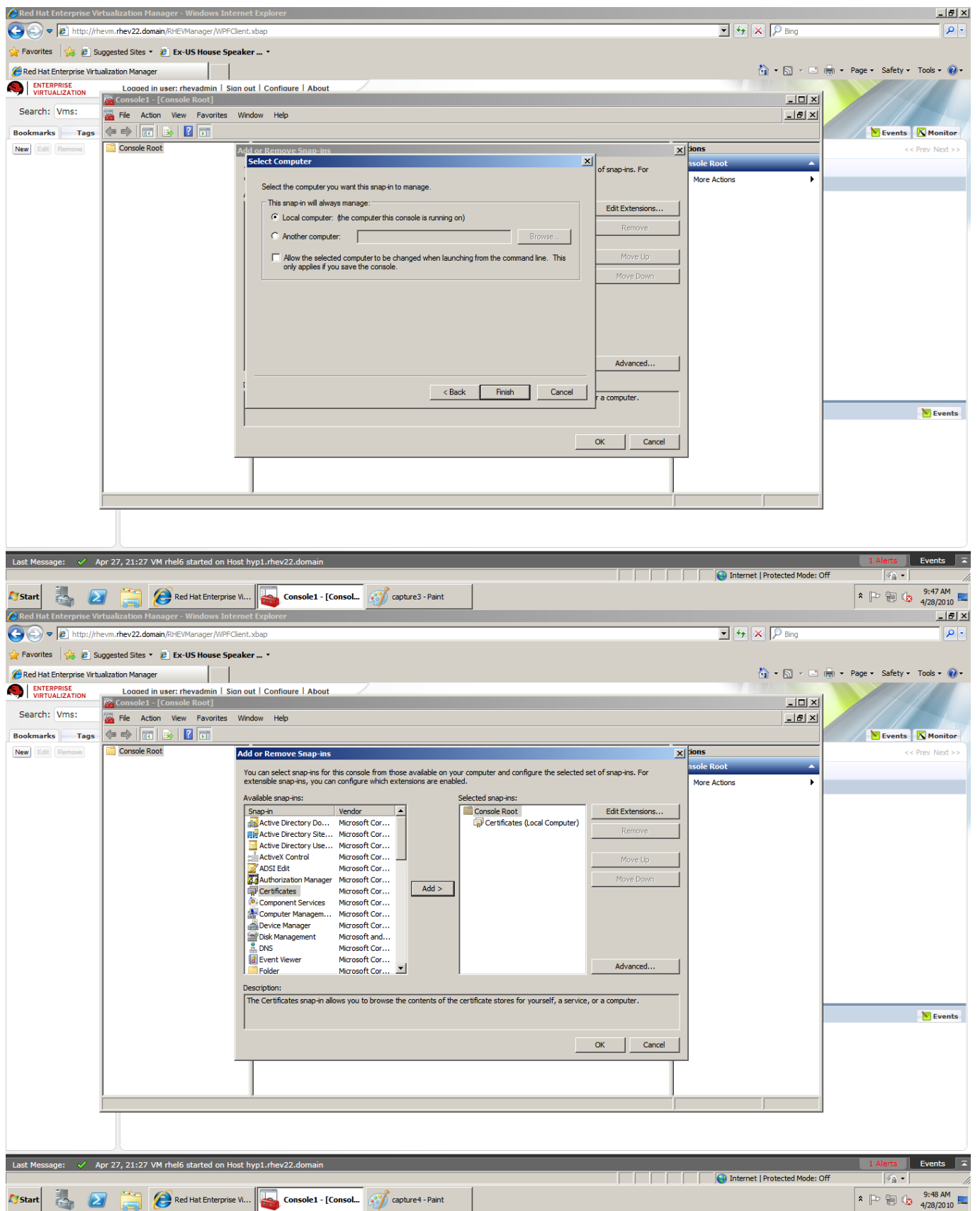
- 1. > MMC
- 2. MMC 가
- 3. -IN→ 가
- 4. 가 / :
- 5. > 가

Last rhev_2.2_
update: 2016/04/28 05:10 - - https://atl.kr/dokuwiki/doku.php/rhev_2.2_%EC%9D%B8%EC%A6%9D%EC%84%9C_%EB%A7%8C%EB%A3%8C_%ED%99%95%EC%9D%B8_%EB%B0%8F_%EA%B0%B1%EC%8B%A0





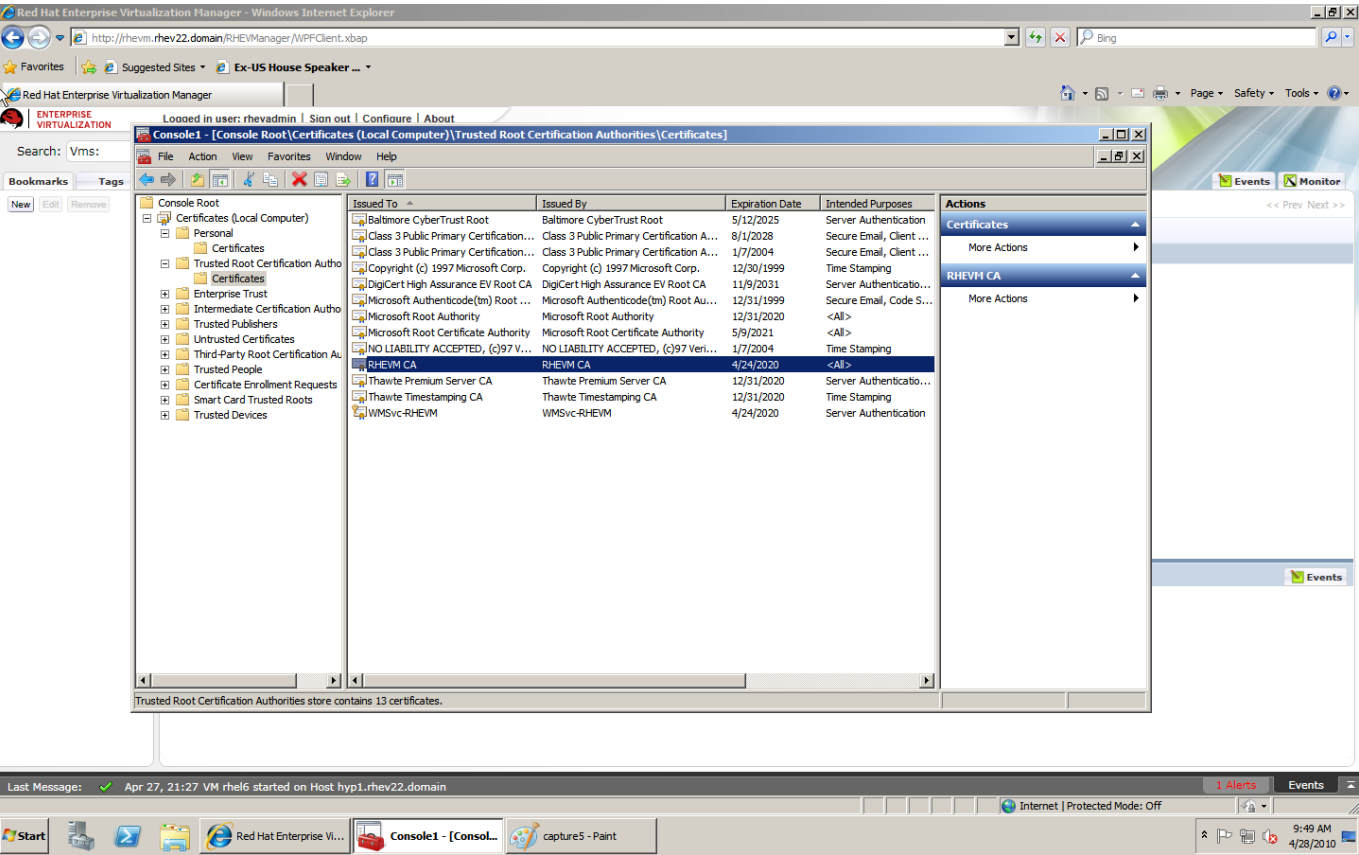
Last update: 2016/04/28 05:10
rhev_2.2_
https://atli.kr/dokuwiki/doku.php/rhev_2.2_%EC%9D%B8%EC%A6%9D%EC%84%9C_%EB%A7%8C%EB%A3%8C_%ED%99%95%EC%9D%B8_%EB%B0%8F_%EA%B0%B1%EC%8B%A0



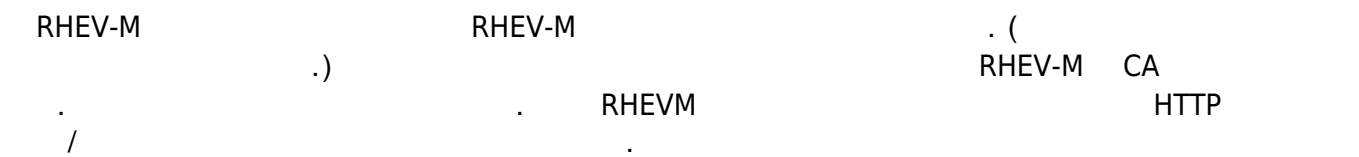
RHEVM CA



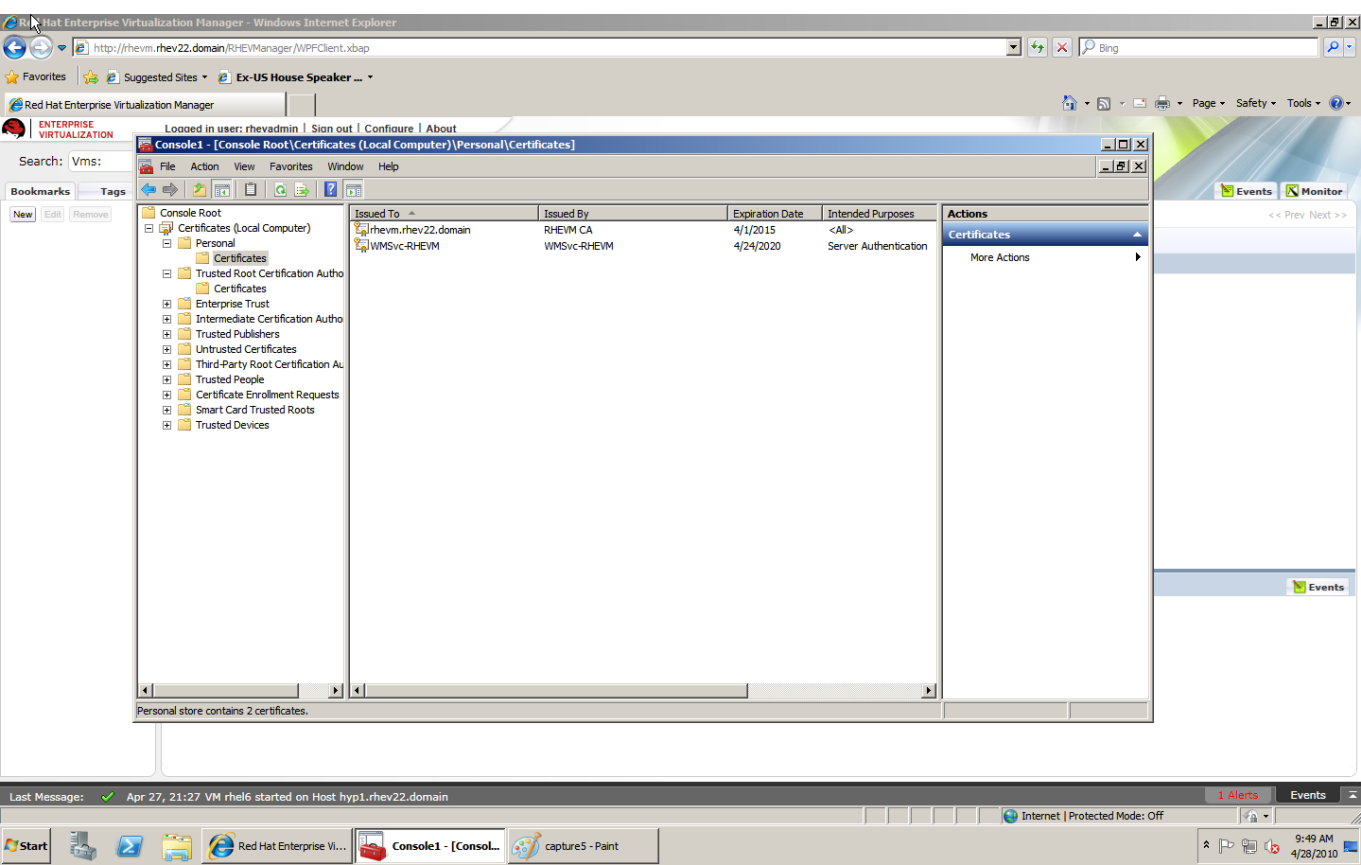
10



FQDN



5

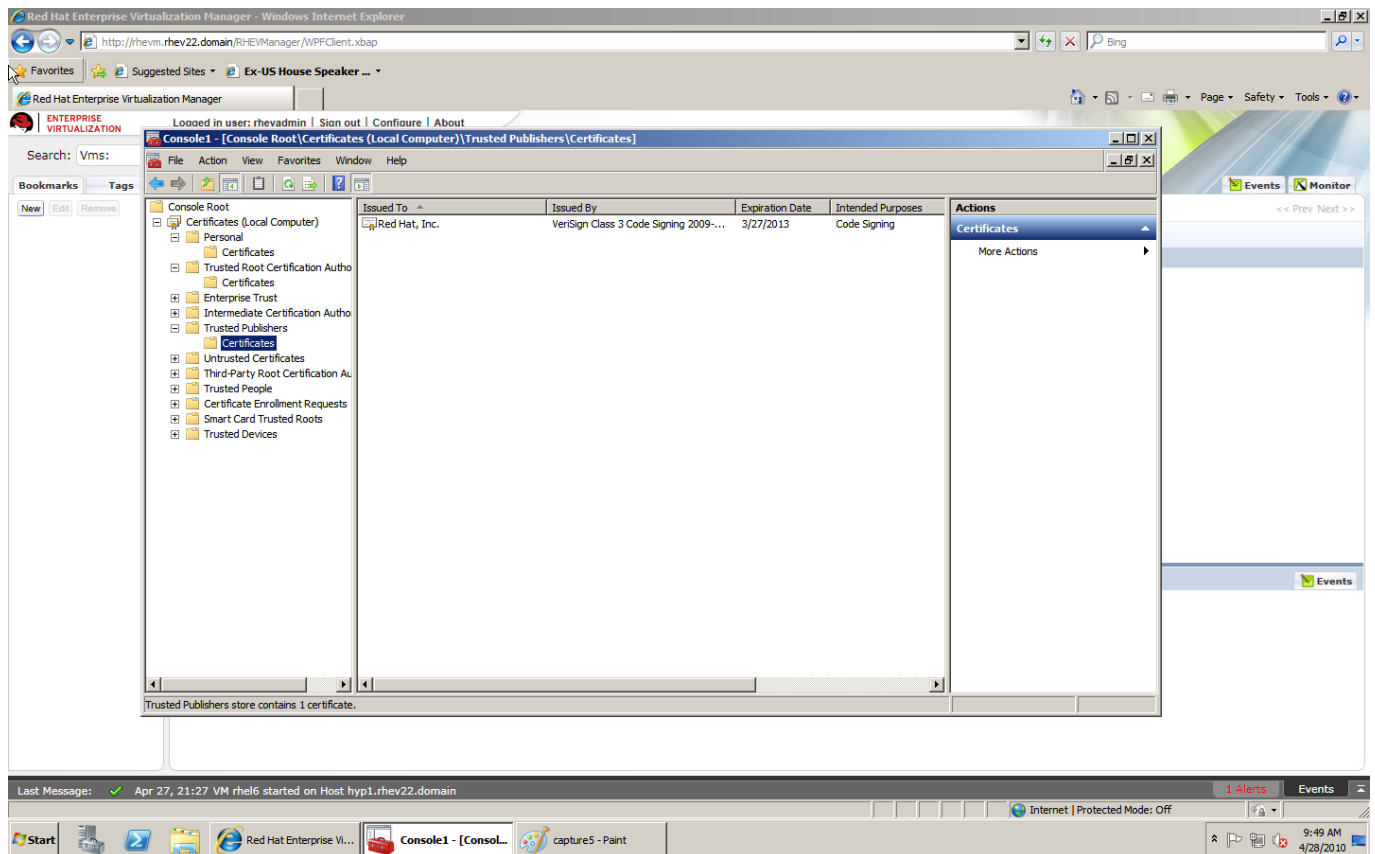


3 CA WPF

RHEV-M

. RHEV 2.x

2013 3 27



RHEV-M

. RHEV-M RHEVM CA
RHEV-M .

: /var/vdsm/ts/certs #

- cacert.pem # ca 10
- vdsmcert.pem # vdsmd 5

pem 가 .

Certificate:

Data:

```
Version: 3 (0x2)
Serial Number: 3 (0x3)
Signature Algorithm: sha1WithRSAEncryption
Issuer: C=US, O=rhev22, CN=RHEVM CA
Validity
    Not Before: Apr 26 21:02:52 2010 GMT
    Not After : Apr 27 04:02:53 2015 GMT
Subject: O=rhev22, CN=192.168.0.141
Subject Public Key Info:
```

/var/vdsm/ts/keys #

- vdskey.pem

가 . **SSLError: certificate verify failed** 가

```
[root@hyp1 ~]# vdsClient -s 0 getVdsStats
Traceback (most recent call last):
  File "/usr/share/vdsm/vdsClient.py", line 1960, in ?
  File "/usr/share/vdsm/vdsClient.py", line 296, in do_getVdsStats
  File "/usr/lib64/python2.4/xmlrpclib.py", line 1096, in __call__
  File "/usr/lib64/python2.4/xmlrpclib.py", line 1383, in __request
  File "/usr/lib64/python2.4/site-packages/M2Crypto/m2xmlrpclib.py", line
47, in request
  File "/usr/lib64/python2.4/httpplib.py", line 804, in endheaders
  File "/usr/lib64/python2.4/httpplib.py", line 685, in _send_output
  File "/usr/lib64/python2.4/httpplib.py", line 652, in send
  File "/usr/lib64/python2.4/site-packages/M2Crypto/httpslib.py", line 47,
in connect
  File "/usr/lib64/python2.4/site-packages/M2Crypto/SSL/Connection.py", line
174, in connect
  File "/usr/lib64/python2.4/site-packages/M2Crypto/SSL/Connection.py", line
167, in connect_ssl
SSLError: certificate verify failed
```

(!) 2.1 Inc 11 2.2
2.1 2010 RHEV-M
(!),
가) , Inc RHEV 2.2.4 RHEVM CA
가 : 2.2.4
가

- [rhev-ca.cer.zip](#)
- [redhatinc.cer.zip](#)

- <https://access.redhat.com/solutions/1528513>

From:
<https://atli.kr/dokuwiki/> - AllThatLinux!

Permanent link:
https://atli.kr/dokuwiki/doku.php/rhev_2.2_%EC%9D%B8%EC%A6%9D%EC%84%9C_%EB%A7%8C%EB%A3%8C_%ED%99%95%EC%9D%B8_%EB%B0%8F_%EA%B0%B1%EC%8B%A0

Last update: 2016/04/28 05:10

