


```
yum install rear
```

ReaR /etc/rear/local.conf .

```
$vim /etc/rear/local.conf
```

```
OUTPUT=ISO                                # OUTPUT : BOOT   ISO
OUTPUT_URL=nfs://10.32.0.65/rear          # OUTPUT_URL :           BOOT ISO

BACKUP=NETFS                              # BACKUP : BACKUP DATA
. (NETFS network filesystem . NFS)
BACKUP_URL=nfs://10.32.0.65/rear          # BACKUP_URL : BACKUP DATA가      NFS
BACKUP_URL=iso:///backup/                 #           ISO
```

BACKUP

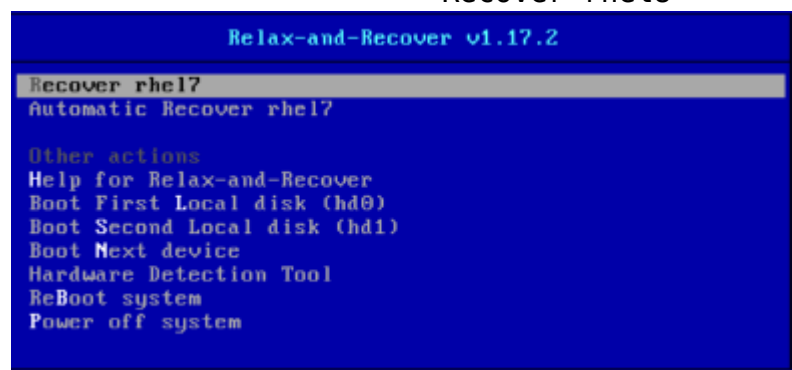
```
$ rear -d -v mkrescue
```

cron /etc/crontab 가 .

```
$ vim /etc/crontab
#      22:00
0 22 * * 1-5 root /usr/sbin/rear mkrescue #
0 22 * * 1-5 root /usr/sbin/rear mkbackuponly #
0 22 * * 1-5 root /usr/sbin/rear mkbackup #
```

ISO . (DVD or KVM)

Recover rhel8 .



가

```
RESCUE rhel8:~ # _
```

```
RESCUE rhel8:~ # ip a add 10.32.0.60/24 dev enp1s0
RESCUE rhel8:~ # ip link set enp1s0 up
RESCUE rhel8:~ # ip a
```

```
nfs server rear -v recover
```

```
RESCUE rhel8:~ # rear -v recover
```

```
/mnt/local 가 .
```

```
가 가 .
```

:

https://access.redhat.com/documentation/ko-kr/red_hat_enterprise_linux/7/html/system_administrator_s_guide/ch-relax-and-recover_rear rear local.conf 가

<https://github.com/rear/rear/blob/master/doc/user-guide/03-configuration.adoc>

```
OUTPUT=PXE PXE
```

```
vim /etc/dhcp/dhcpd.conf
-----
filename "rear/pxelinux.0"
systemctl restart dhcpd 가 .
```

```
mkdir -p /var/lib/tftpboot/rear/pxelinux.cfg
cp /usr/share/syslinux/pxelinux.0 /var/lib/tftpboot/rear
cp /usr/share/syslinux/ldlinux.c32 /var/lib/tftpboot/rear
cp /usr/share/syslinux/menu.c32 /var/lib/tftpboot/rear
```

```
PXE /var/lib/tftpboot/rear/ .
```

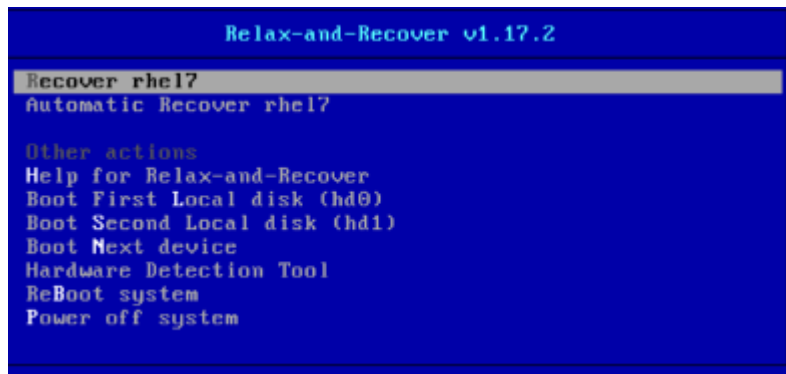
PXE

```
cp /var/lib/tftpboot/rear/rear-hostname
/var/lib/tftpboot/rear/pxelinux.cfg/default
chmod -R 777 /var/lib/tftpboot/rear/
```

PXE

boot: 가

rear



From:

<https://atl.kr/dokuwiki/> - AllThatLinux!

Permanent link:

<https://atl.kr/dokuwiki/doku.php/rear?rev=1700038677>Last update: **2023/11/15 08:57**