


```
yum install rear
```

ReaR /etc/rear/local.conf .

```
$vim /etc/rear/local.conf
```

```

OUTPUT=ISO # OUTPUT : BOOT ISO
OUTPUT_URL=nfs://10.32.0.65/rear # OUTPUT_URL : BOOT ISO

BACKUP=NETFS # BACKUP : BACKUP DATA
. (NETFS network filesystem . NFS)
BACKUP_URL=nfs://10.32.0.65/rear # BACKUP_URL : BACKUP DATA가 NFS
BACKUP_URL=iso:///backup/ # ISO

```

BACKUP

```
$ rear -d -v mkrescue
```

cron /etc/crontab 가 .

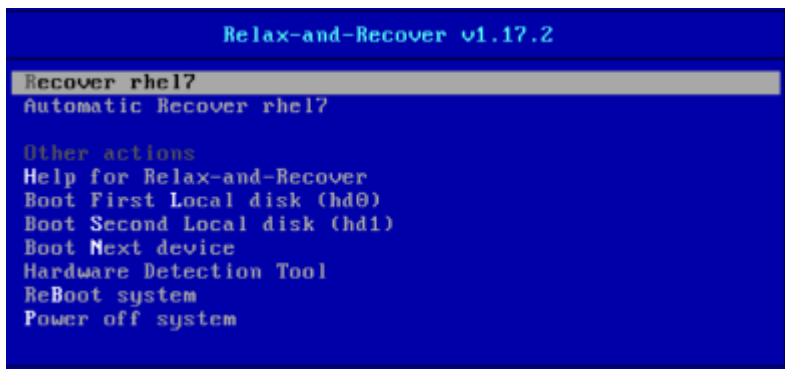
```

$ vim /etc/crontab
# 22:00
0 22 * * 1-5 root /usr/sbin/rear mkrescue #
0 22 * * 1-5 root /usr/sbin/rear mkbackuponly #
0 22 * * 1-5 root /usr/sbin/rear mkbackup #

```

ISO . (DVD or KVM)

Recover rhel8 .



가

```
RESCUE rhel8:~ # _
```

```
RESCUE rhel8:~ # ip a add 10.32.0.60/24 dev enp1s0
RESCUE rhel8:~ # ip link set enp1s0 up
RESCUE rhel8:~ # ip a
```

```
nfs server rear -v recover
```

```
RESCUE rhel8:~ # rear -v recover
```

```
/mnt/local 가 .
```

```
가 가 .
```

:

https://access.redhat.com/documentation/ko-kr/red_hat_enterprise_linux/7/html/system_administrator_s_guide/ch-relax-and-recover_rear_rear_local.conf 가

<https://github.com/rear/rear/blob/master/doc/user-guide/03-configuration.adoc>

From:
<https://atl.kr/dokuwiki/> - AllThatLinux!

Permanent link:
<https://atl.kr/dokuwiki/doku.php/rear?rev=1699940628>

Last update: **2023/11/14 05:43**

