

KVM - Wok / Kimchi HTML5 Web Manager

(On CentOS 7)

NetworkManager

firewalld

selinux

EPEL

()

Wok / Kimchi

..... 3

..... 3

..... 3

..... 3

..... 3

..... 4

..... 4

..... 4

..... 4

..... 5

..... 5

..... 7

..... 7

..... 8

KVM - Wok / Kimchi HTML5 Web Manager

: <https://github.com/kimchi-project/kimchi>

Kimchi KVM HTML5 . 가 KVM
. Kimchi Wok . Kimchi libvirt
KVM . HTML5
.

(On CentOS 7)

CentOS 7 가

NetworkManager

NAT NetworkManager
NetworkManager .

```
# systemctl disable NetworkManager
```

firewalld

가 .

```
# systemctl disable firewalld
```

selinux

```
# This file controls the state of SELinux on the system.
# SELINUX= can take one of these three values:
#   enforcing - SELinux security policy is enforced.
#   permissive - SELinux prints warnings instead of enforcing.
#   disabled - No SELinux policy is loaded.
SELINUX=disabled # <----- Disabled
# SELINUXTYPE= can take one of three two values:
#   targeted - Targeted processes are protected,
#   minimum - Modification of targeted policy. Only selected processes are
protected.
#   mls - Multi Level Security protection.
```

```
SELINUXTYPE=targeted
```

EPEL

EPEL 가 .

```
# yum -y install  
https://dl.fedoraproject.org/pub/epel/epel-release-latest-7.noarch.rpm
```

()

.

```
# yum -y update  
  
# reboot
```

.

Wok / Kimchi

<https://github.com/kimchi-project/kimchi>

가 .

```
# yum install  
https://github.com/kimchi-project/kimchi/releases/download/2.5.0/wok-2.5.0-0  
.el7.centos.noarch.rpm  
# yum install  
https://github.com/kimchi-project/kimchi/releases/download/2.5.0/kimchi-2.5.  
0-0.el7.centos.noarch.rpm
```

```
# systemctl enable wokd  
# systemctl start wokd
```

https://hostname_or_ip:8001/ 가 .



Language

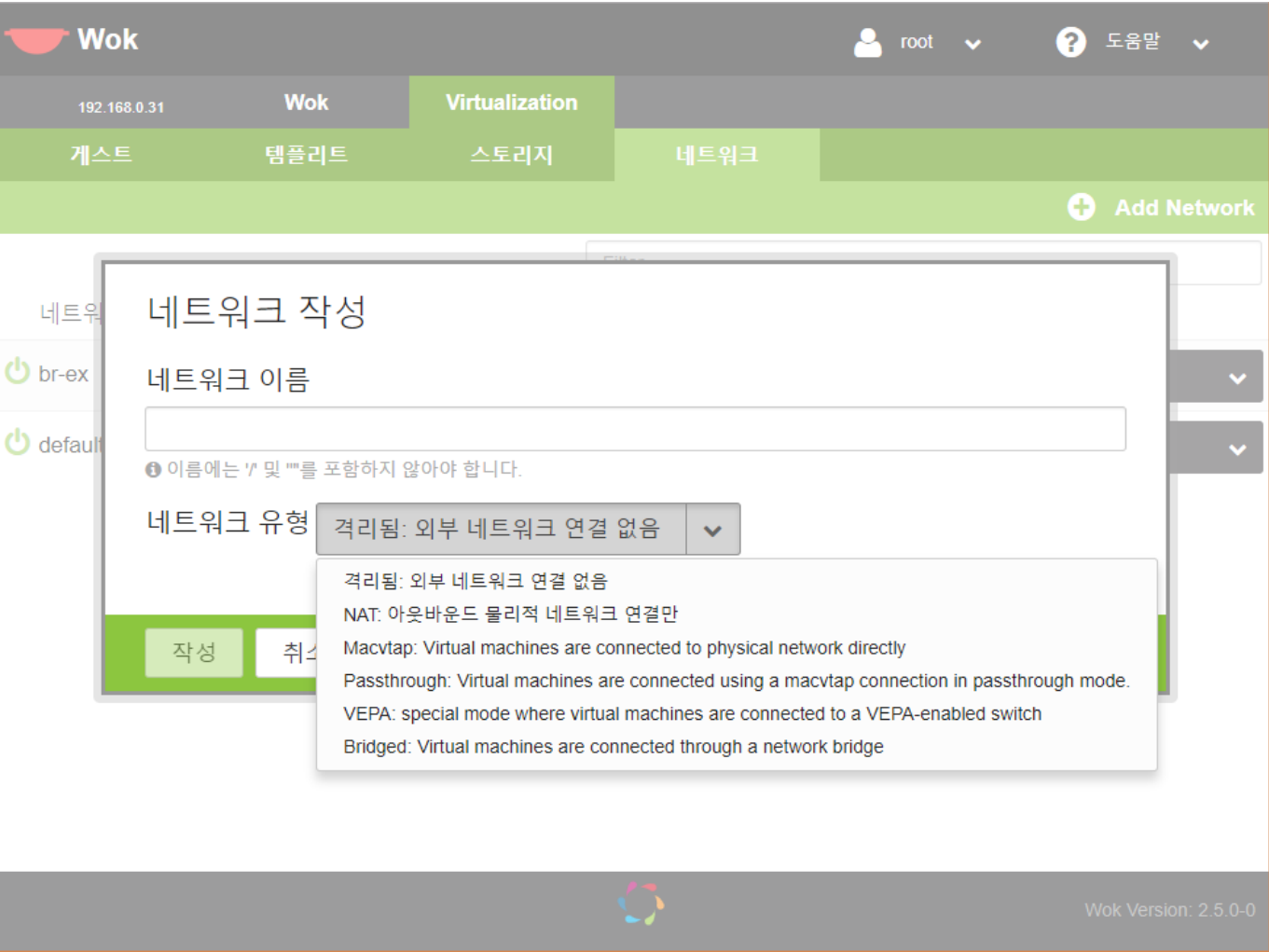


Locale

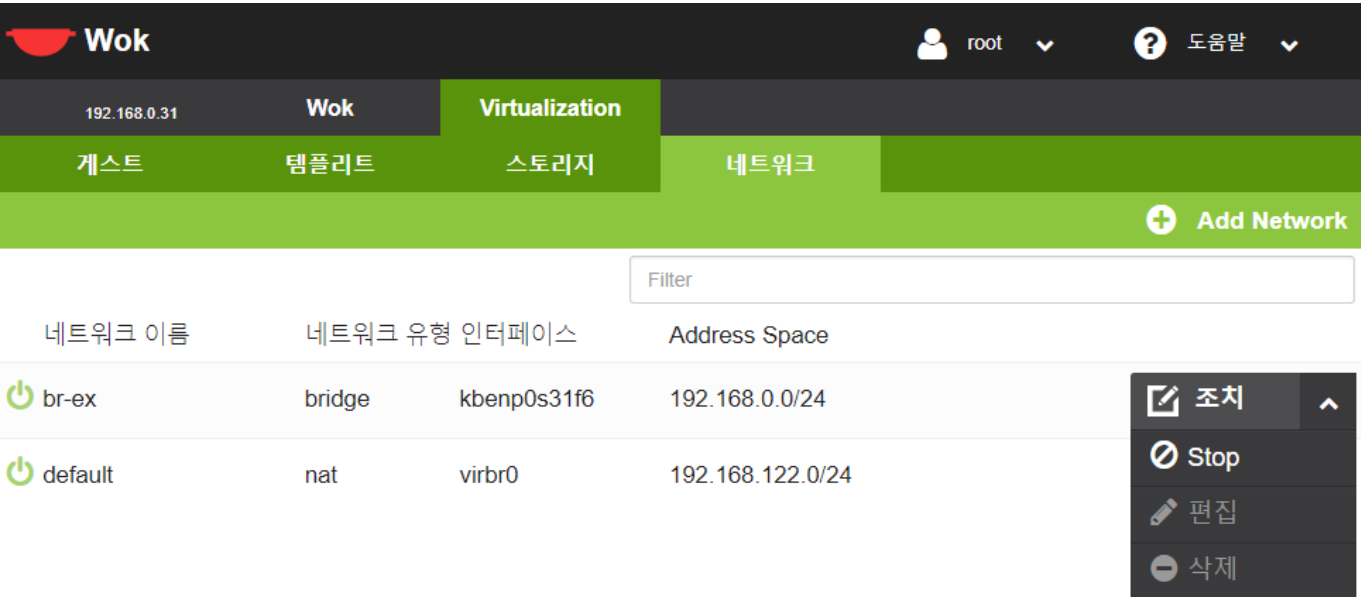


OS

.

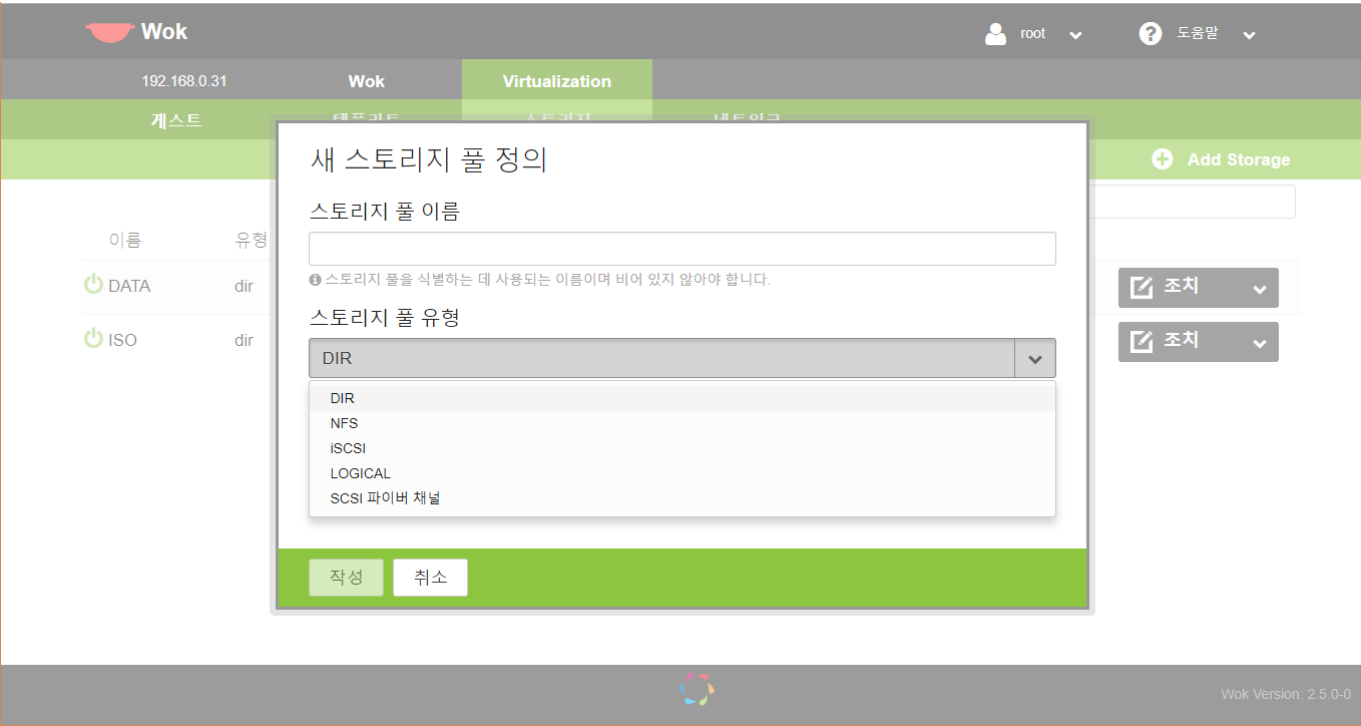


가 KVM 가 가



가 Start, Stop .

VM



5가 가

VM
ISO



default
가 .

```
default
default
```

```
/usr/share/wok/plugins/kimchi/ui/js/kimchi.min.js 8572 line
```

1024;

```
var sizeInMB = parseInt(settings['capacity']) * 1024 *  
  
var sizeInGB = sizeInMB * 1024;  
settings['capacity'] = sizeInMB;
```


From:

<https://atl.kr/dokuwiki/> - **AllThatLinux!**

Permanent link:

https://atl.kr/dokuwiki/doku.php/kvm_-_wok_kimchi_manager?rev=1612325340



Last update: **2021/02/03 04:09**