

KVM - Wok / Kimchi HTML5 Web Manager 3

(On CentOS 7) 3

 NetworkManager 3

 firewalld 3

 selinux 3

 EPEL 4

 () 4

Wok / Kimchi 4

 4

 5

 5

 7

 7

KVM - Wok / Kimchi HTML5 Web Manager

: <https://github.com/kimchi-project/kimchi>

Kimchi KVM HTML5 . 가 KVM
KVM . Kimchi Wok . Kimchi libvirt
KVM . HTML5

(On CentOS 7)

CentOS 7 가

NetworkManager

NAT NetworkManager
NetworkManager .

```
# systemctl disable NetworkManager
```

firewalld

가

```
# systemctl disable firewalld
```

selinux

```
# This file controls the state of SELinux on the system.
# SELINUX= can take one of these three values:
#   enforcing - SELinux security policy is enforced.
#   permissive - SELinux prints warnings instead of enforcing.
#   disabled - No SELinux policy is loaded.
SELINUX=disabled # <----- Disabled
# SELINUXTYPE= can take one of three two values:
#   targeted - Targeted processes are protected,
#   minimum - Modification of targeted policy. Only selected processes are
protected.
#   mls - Multi Level Security protection.
```

```
SELINUXTYPE=targeted
```

EPEL

EPEL 가 .

```
# yum -y install  
https://dl.fedoraproject.org/pub/epel/epel-release-latest-7.noarch.rpm
```

()

```
# yum -y update
```

```
# reboot
```

Wok / Kimchi

<https://github.com/kimchi-project/kimchi>

가 .

```
# yum install  
https://github.com/kimchi-project/kimchi/releases/download/2.5.0/wok-2.5.0-0  
.el7.centos.noarch.rpm  
# yum install  
https://github.com/kimchi-project/kimchi/releases/download/2.5.0/kimchi-2.5.  
0-0.el7.centos.noarch.rpm
```

```
# systemctl enable wokd  
# systemctl start wokd
```

https://hostname_or_ip:8001/

가



Language

Locale

OS

.

네트워크 이름

네트워크 유형

격리됨: 외부 네트워크 연결 없음

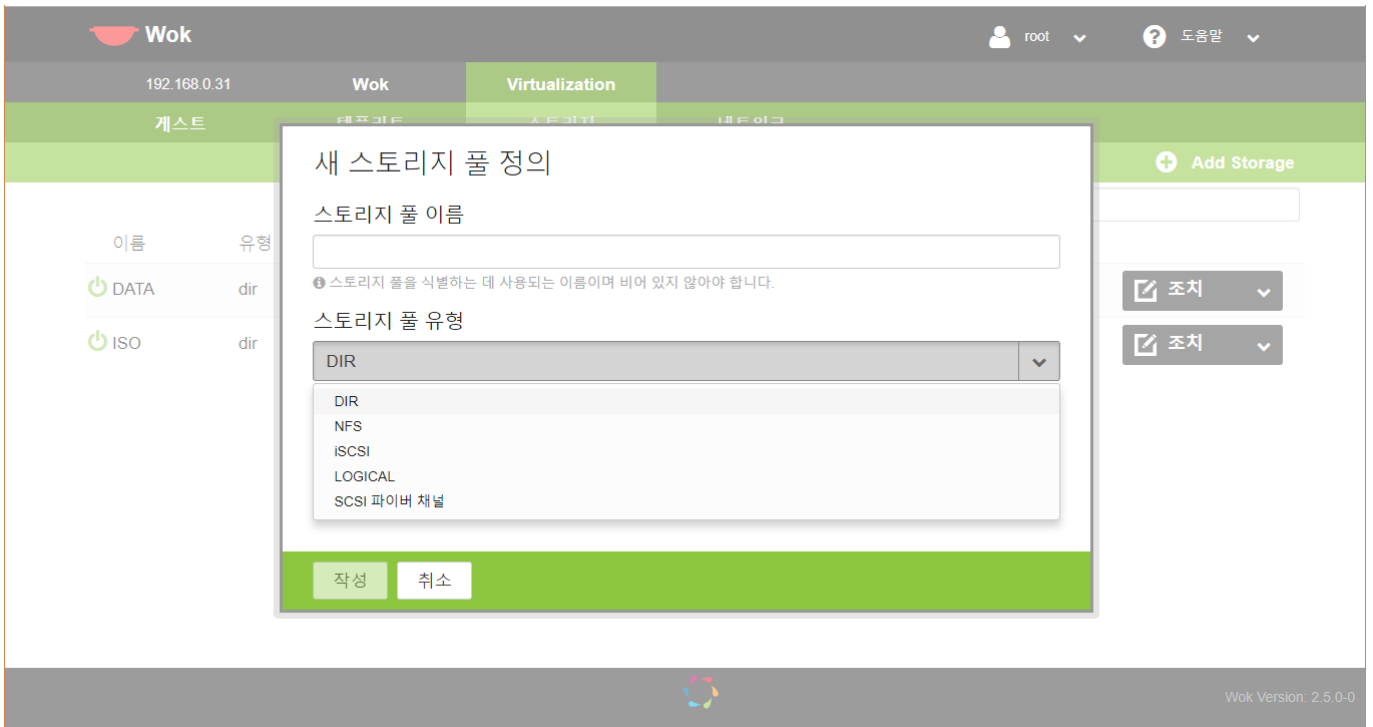
격리됨: 외부 네트워크 연결 없음
 NAT: 아웃바운드 물리적 네트워크 연결만
 Macvtap: Virtual machines are connected to physical network directly
 Passthrough: Virtual machines are connected using a macvtap connection in passthrough mode.
 VEPA: special mode where virtual machines are connected to a VEPA-enabled switch
 Bridged: Virtual machines are connected through a network bridge

가 . KVM 가 가

| 네트워크 이름 | 네트워크 유형 | 인터페이스 | Address Space |
|---------|---------|-------------|------------------|
| br-ex | bridge | kbenp0s31f6 | 192.168.0.0/24 |
| default | nat | virbr0 | 192.168.122.0/24 |

가 Start, Stop .

VM



5가

가

VM

ISO

템플릿 추가

Template Name

The name used to identify the template. If omitted, a name will be automatically chosen.
When selecting more than one Image Template, a name will be automatically chosen for each Image Template selected.

Where is the source media for this template?

Image Template Netboot Template

파일 경로:

다음 ISO가 사용 가능합니다.

모두

| | | | |
|--|---|--|---|
| CentOS-7-x86... Centos OS 7 버전 906.0M Size | rhel-server-7.5... Rhel OS 7.5 버전 4.3G Size | rhel-server-6.1... Rhel OS 6.10 버전 3.6G Size | Ubuntu Server ... Ubuntu OS 14.10 버전 Not Available Size |
| Ubuntu Server ... Ubuntu | Ubuntu Server ... Ubuntu | gentoo-201408... Gentoo | gentoo-201605... Gentoo |

default 가 . default default

From: <https://atl.kr/dokuwiki/> - AllThatLinux!

Permanent link: https://atl.kr/dokuwiki/doku.php/kvm_-_wok_kimchi_manager?rev=1536220553

Last update: 2018/09/06 07:55