

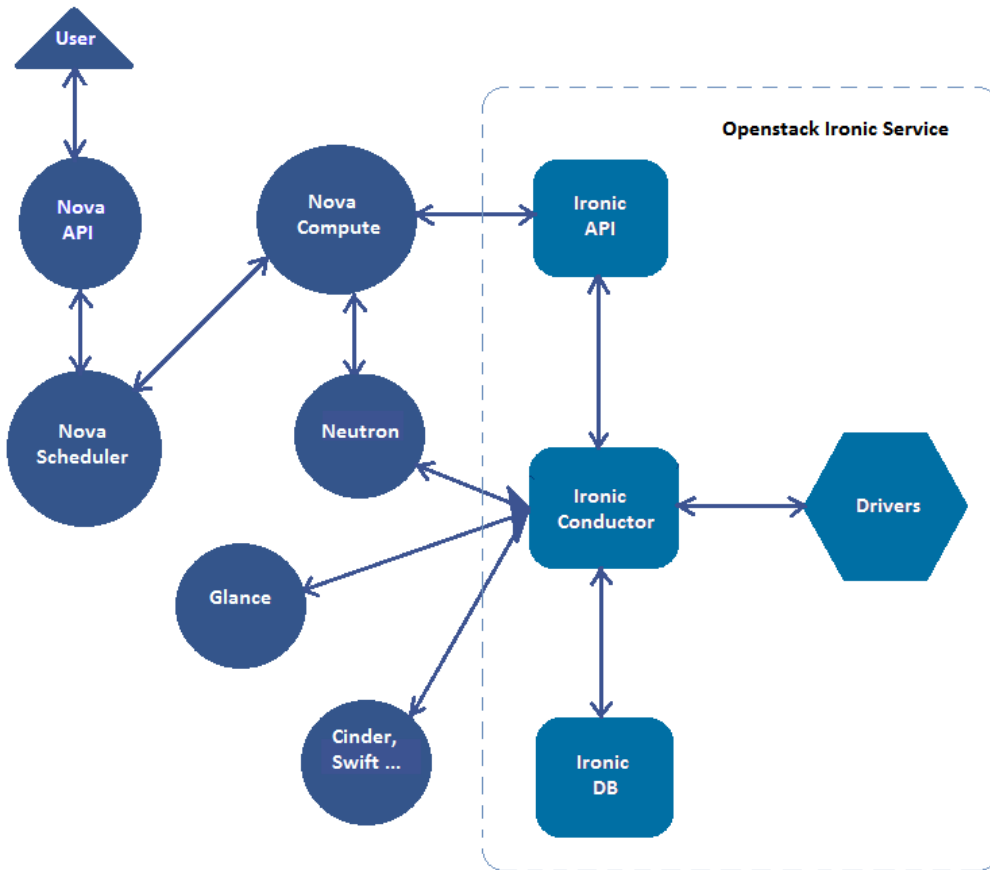
Ironic	3
	3
	3
	4
	4
iSCSI	UML	6
	UML	8
	12

ironic_

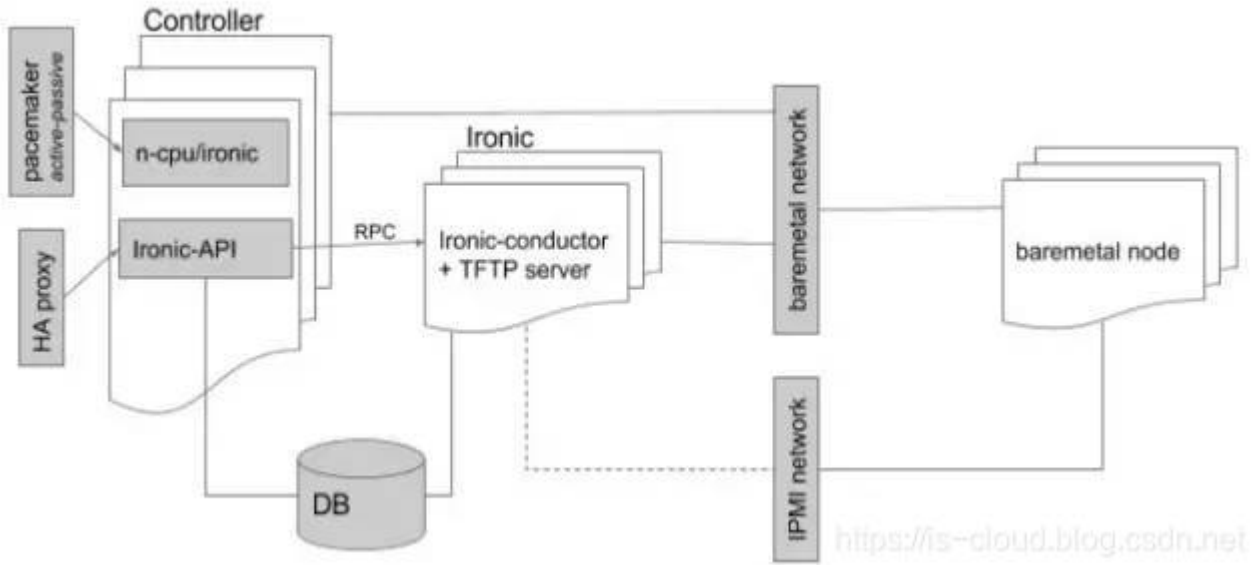
Last update: 2024/10/11 06:32 https://atl.kr/dokuwiki/doku.php/ironic_%EB%B2%A0%EC%96%B4%EB%A9%94%ED%83%88_%EC%9D%B8%EC%8A%A4%ED%84%B4%EC%8A%A4%EC%9D%98_%EB%B0%B0%ED%8F%AC_%ED%94%84%EB%A1%9C%EC%84%B8%EC%8A%A4

Ironic

Figure 1.2. Logical Architecture



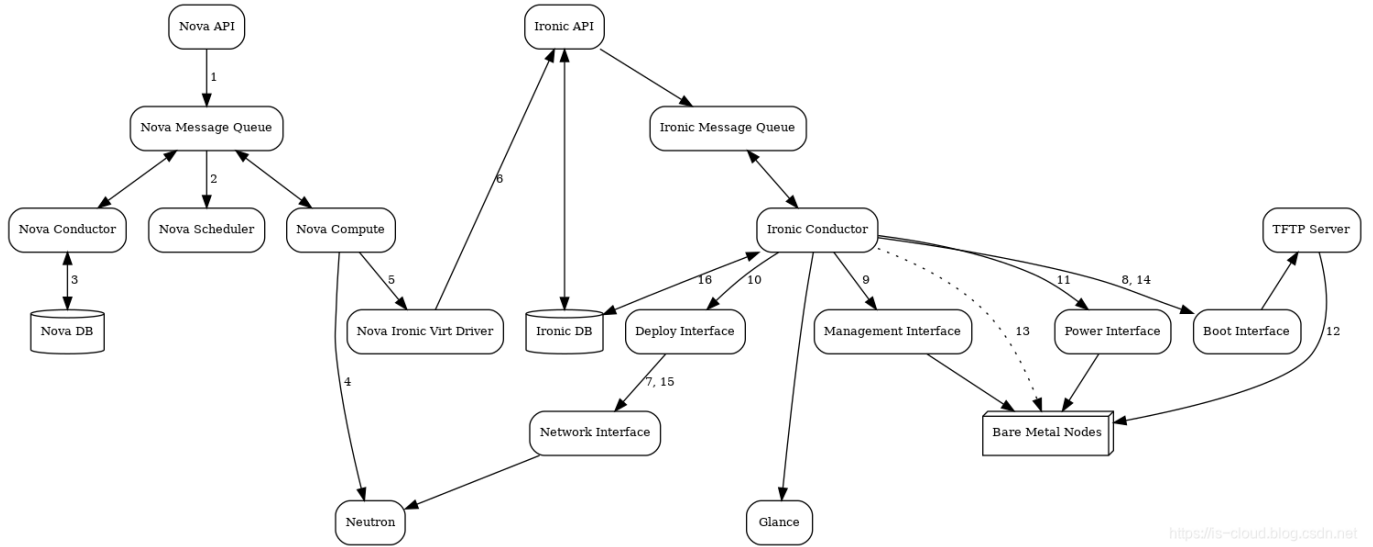
<https://is-cloud.blog.csdn.net>



https://is-cloud.blog.csdn.net

: <https://docs.openstack.org/ironic/latest/user/index.html>

- **ironic-conductor**가 **tftp-server, ipmi, syslinux**
- **Nova**가 **Ironi**, **Nova**
- **Flavors**가 **Nova Flavor**
- **Glance**
 - **bm-deploy-kernel**
 - **bm-deploy-ramdisk**
 - **user-image**
 - **user-image-vmlinuz**
 - **user-image-initrd**
- **Ironi RESTful API**



<https://is-cloud.blog.csdn.net>

1. Nova API Nova , Flavor extra_specs(:
cpu_arch)
2. Nova Message Queue
3. Nova Conductor
4. Nova Compute 가 Nova (VIF) , MAC (NIC) , MAC
VIF가
5. Nova virt driver.spawn spawn .spawn virt Nova
 - o , UUID, Flavor Ironic
 - o Ironic API
 - o VIF Neutron 가 Ironic Ironic
 , VIF MAC
 - o config
6. Nova Ironic virt Ironic API Ironic Conductor
7. 가 가 , Neutron API DHCP PXE/TFTP
. Neutron , flat Ironic Nova
8. Ironic (i)PXE
9. Ironic
10. Ironic (iscsi),
(: netboot).
11. Ironic
- 12.
13. , conductor가 iSCSI (iSCSI
) , 가 URL (URL Swift API
(: Swift RadosGW) 가
14. PXE (

), 가 , IPMI/BMC .

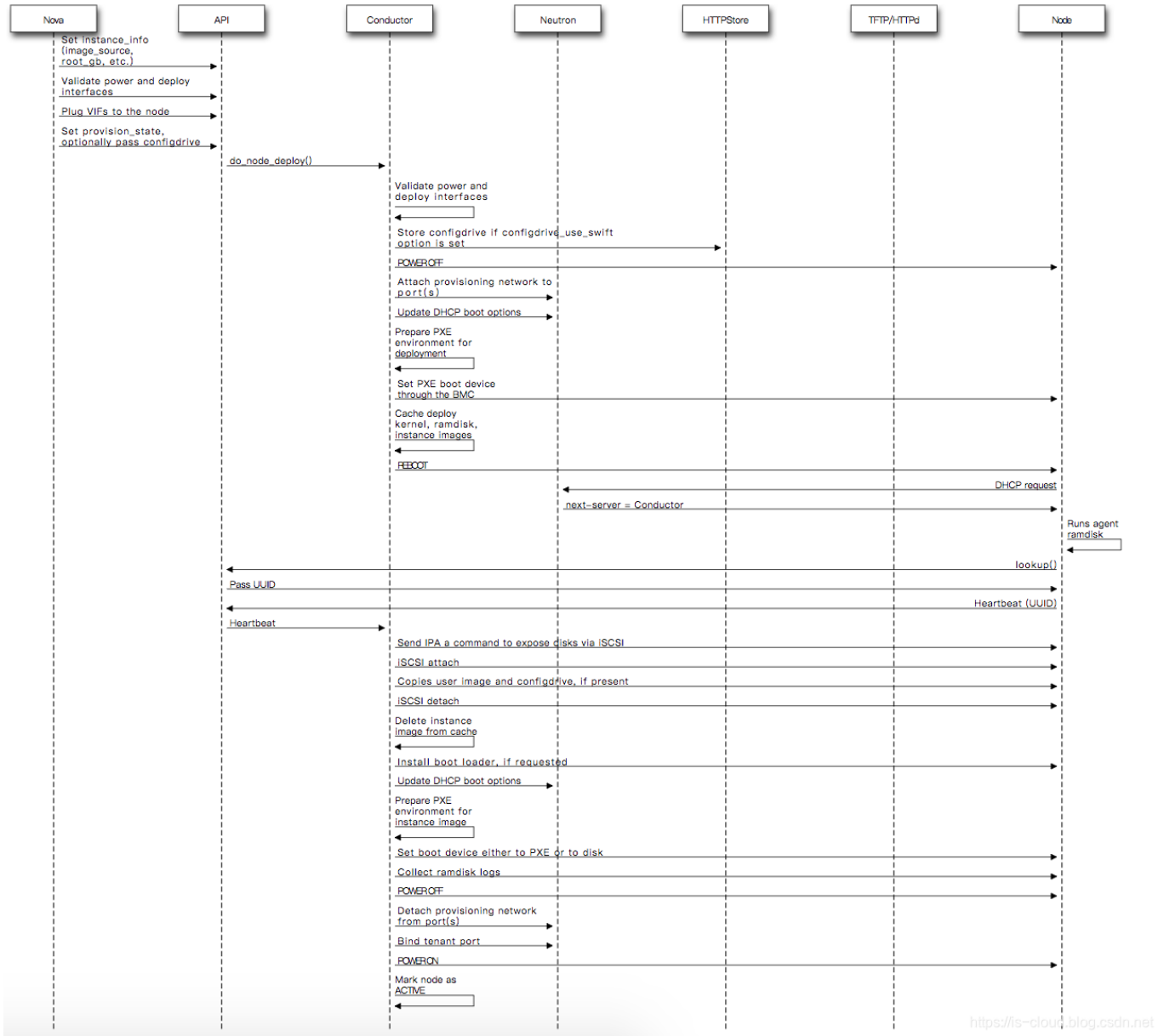
15. (

16.). 가 active .

iSCSI UML

iSCSI , ironic-conductor가 iSCSI .

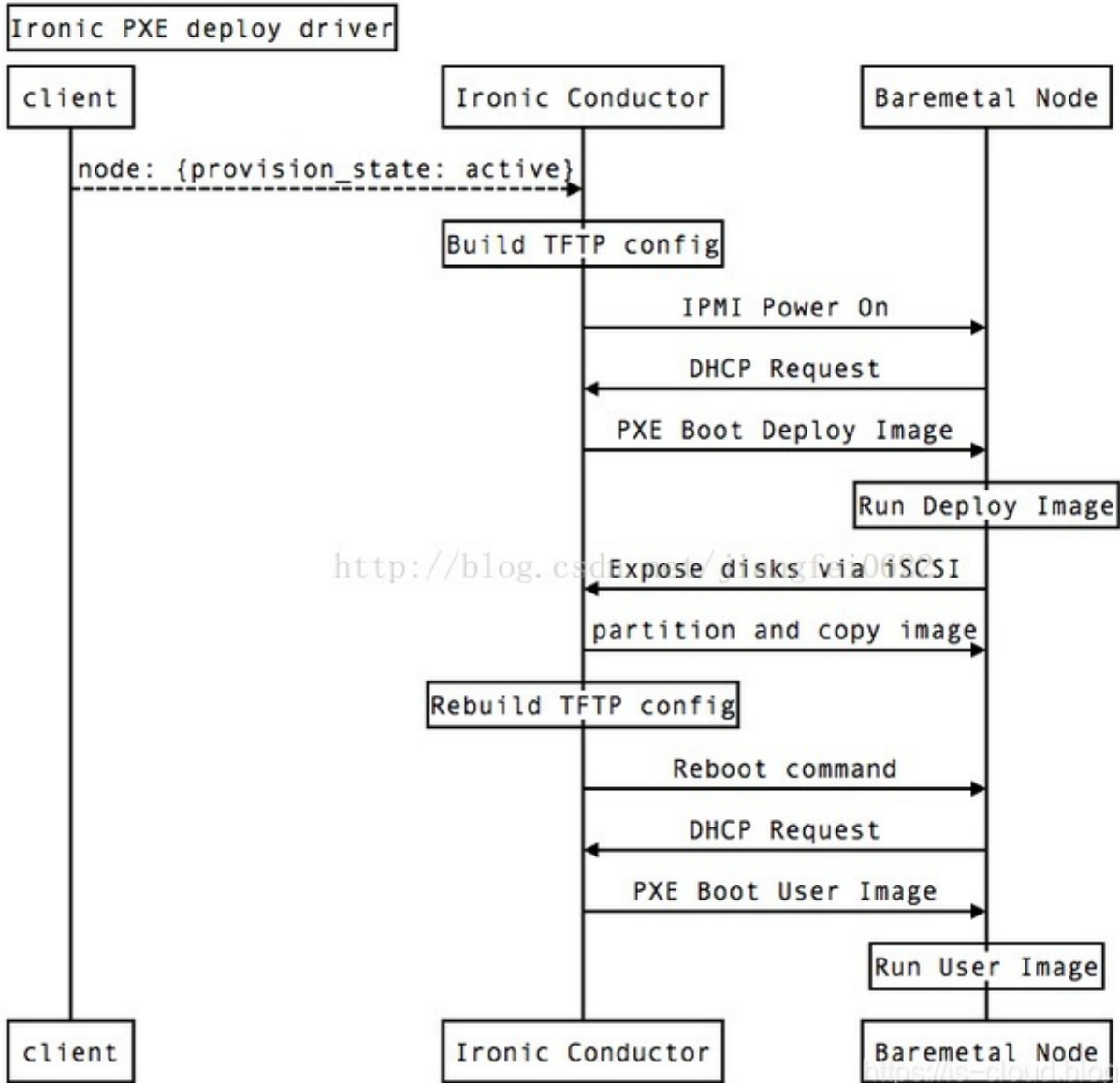
```
openstack baremetal node create --driver ipmi --deploy-interface iscsi  
openstack baremetal node set <NODE> --deploy-interface iscsi
```



<https://is-cloud.blog.csdn.net>

1. Nova API
2. Nova (: ,) Ironic Flavor extra_spec (: cpu_arch, baremetal:deploy_kernel_id, baremetal:deploy_ramdisk_id).
3. Nova Compute , Build spawn Ironic API , Ironic .
4. Ironic OpenStack Glance (Deploy Images User Images) 가 , Neutron , Cinder 가 .
5. Ironic , PXE TFTP IPMI PXE .
6. DHCP Ironic Conductor , TFTP Conductor Deploy Images 가 . Conductor가 RAMDisk , IPA iSCSI , Conductor User Images .
7. 가 , IPMI .

PXE

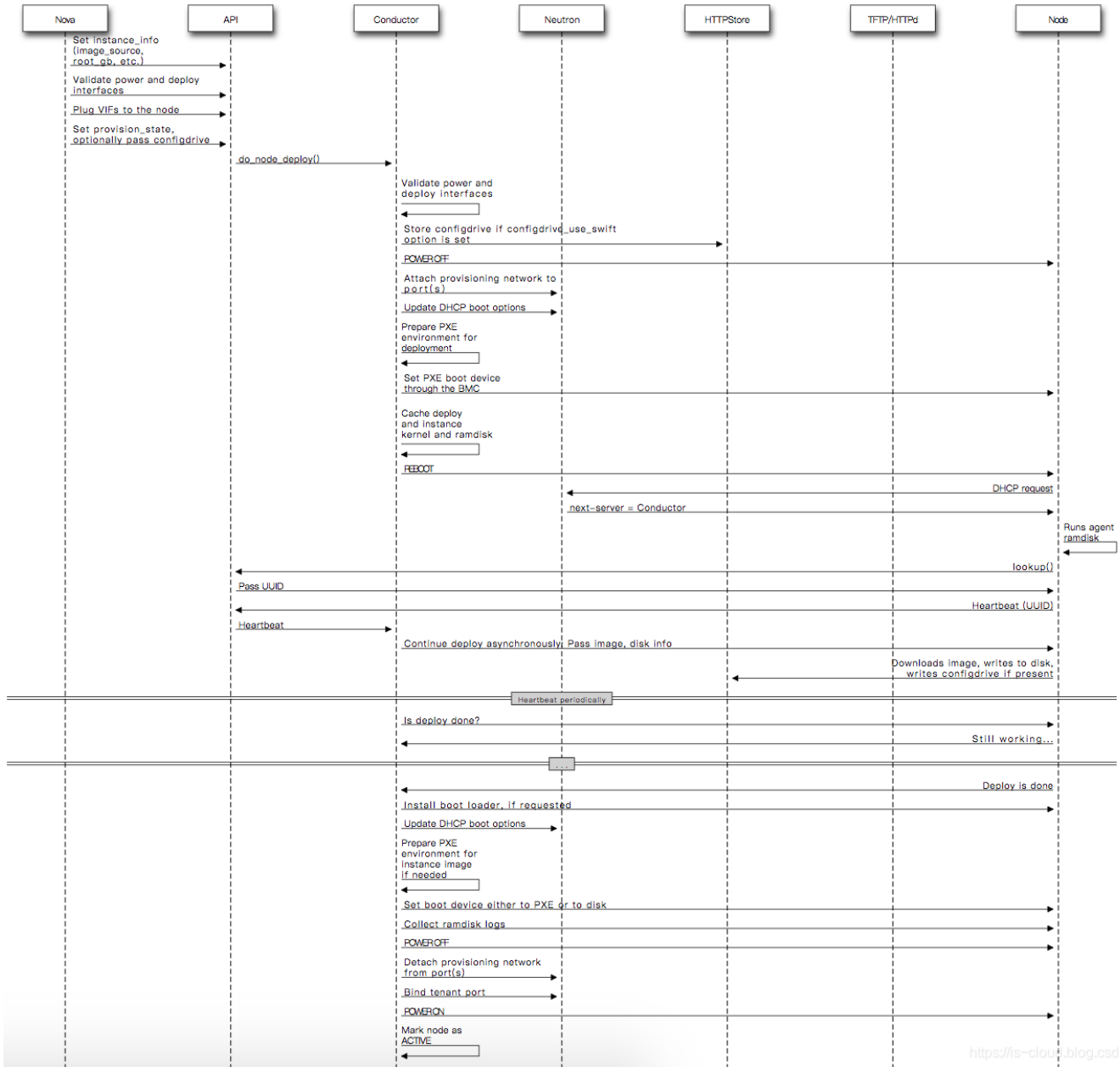


UML

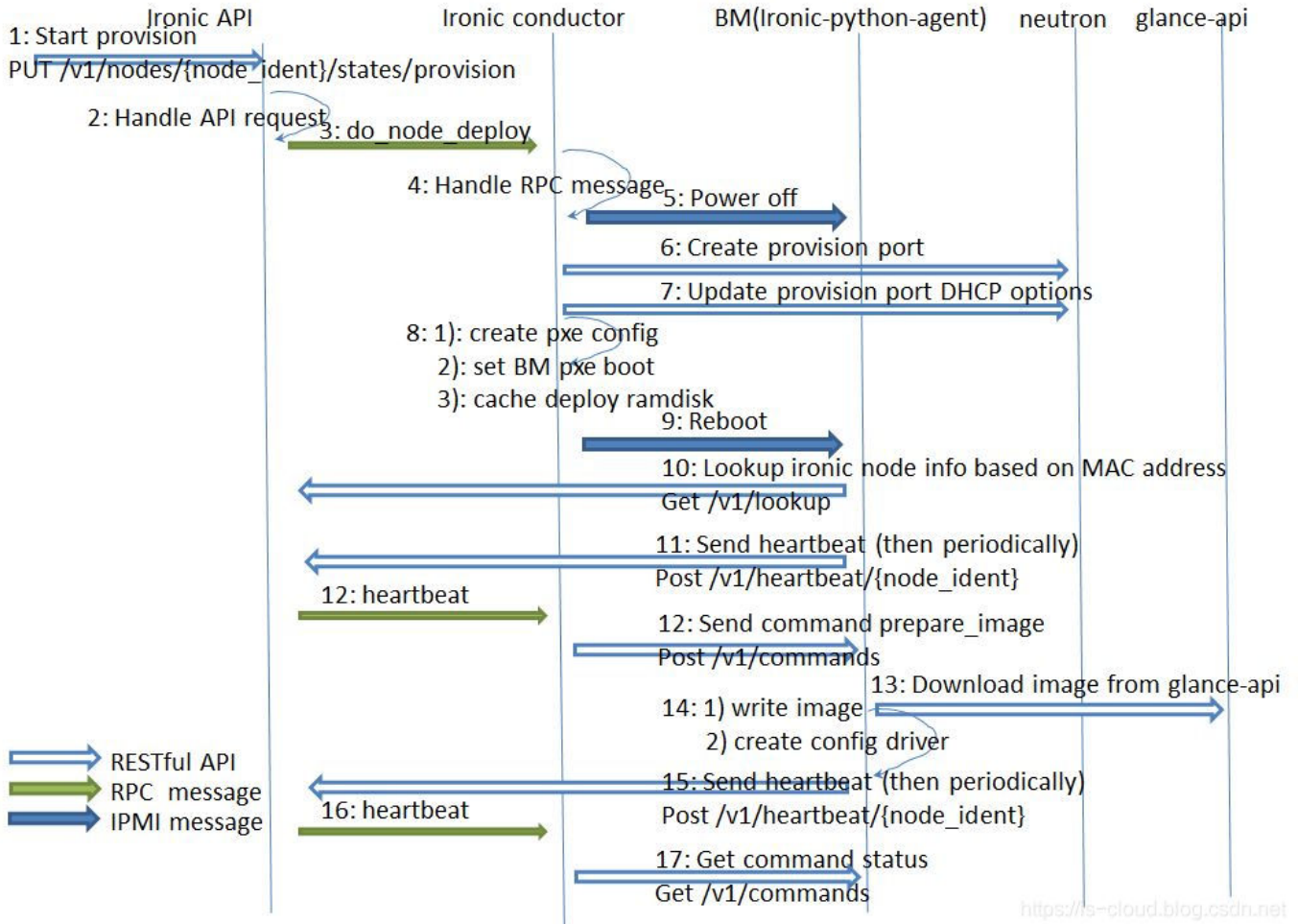
Direct (Swift RadosGW) URL HTTP 가 HTTP
 , 가 HTTP URL

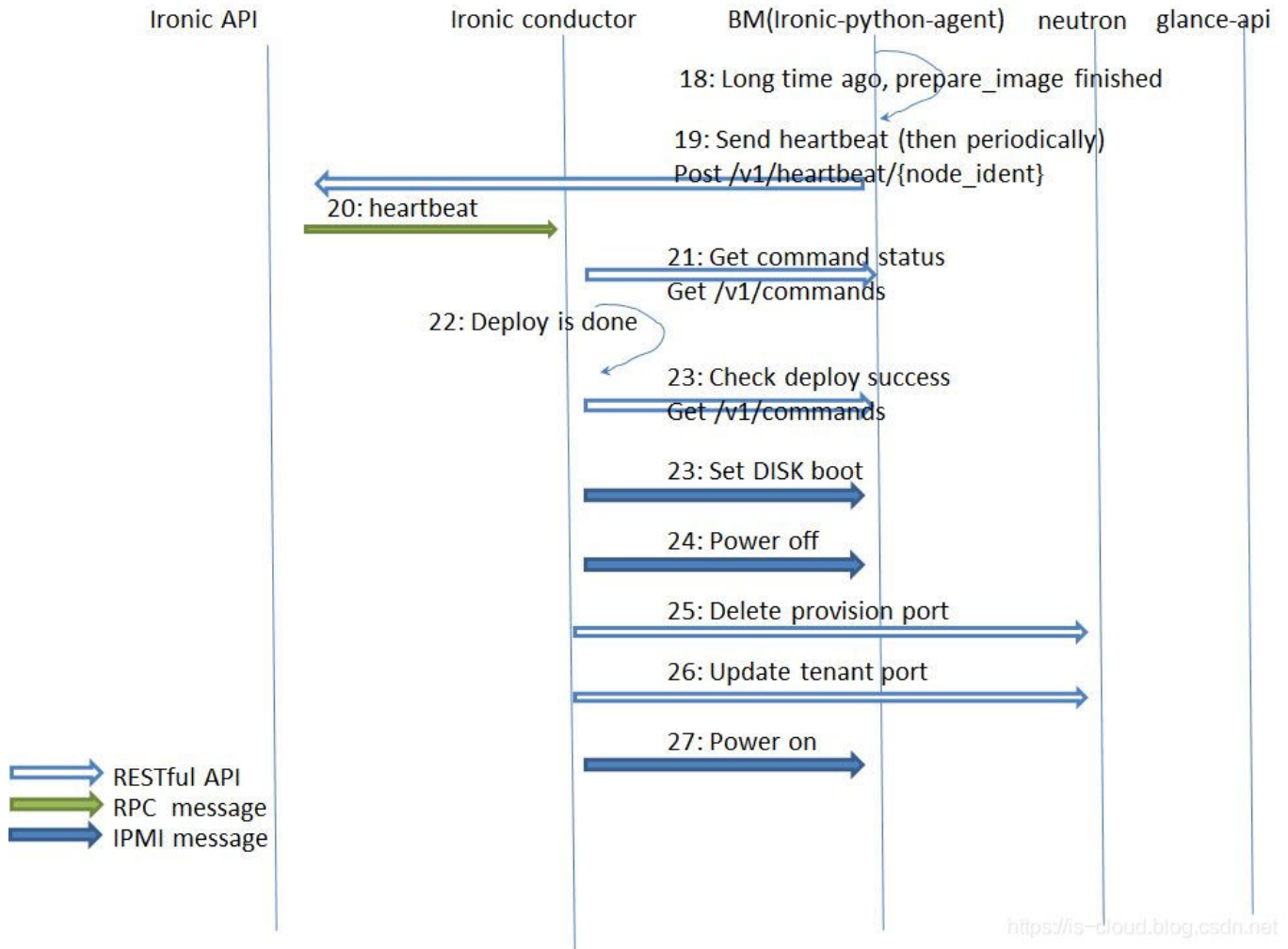
```

openstack baremetal node create --driver ipmi --deploy-interface direct
openstack baremetal node set <NODE> --deploy-interface direct
  
```



<https://is-cloud.blog.csdn.net>





1. Provision

2.

3. IPA lookup Ironic Conductor

ironic_node_uuid 가

4. IPA Heartbeat Ironic Conductor가 prepare_image IPA , IPA (Direct), Ironic

300GB

10

5. ironic-conductor Heartbeat

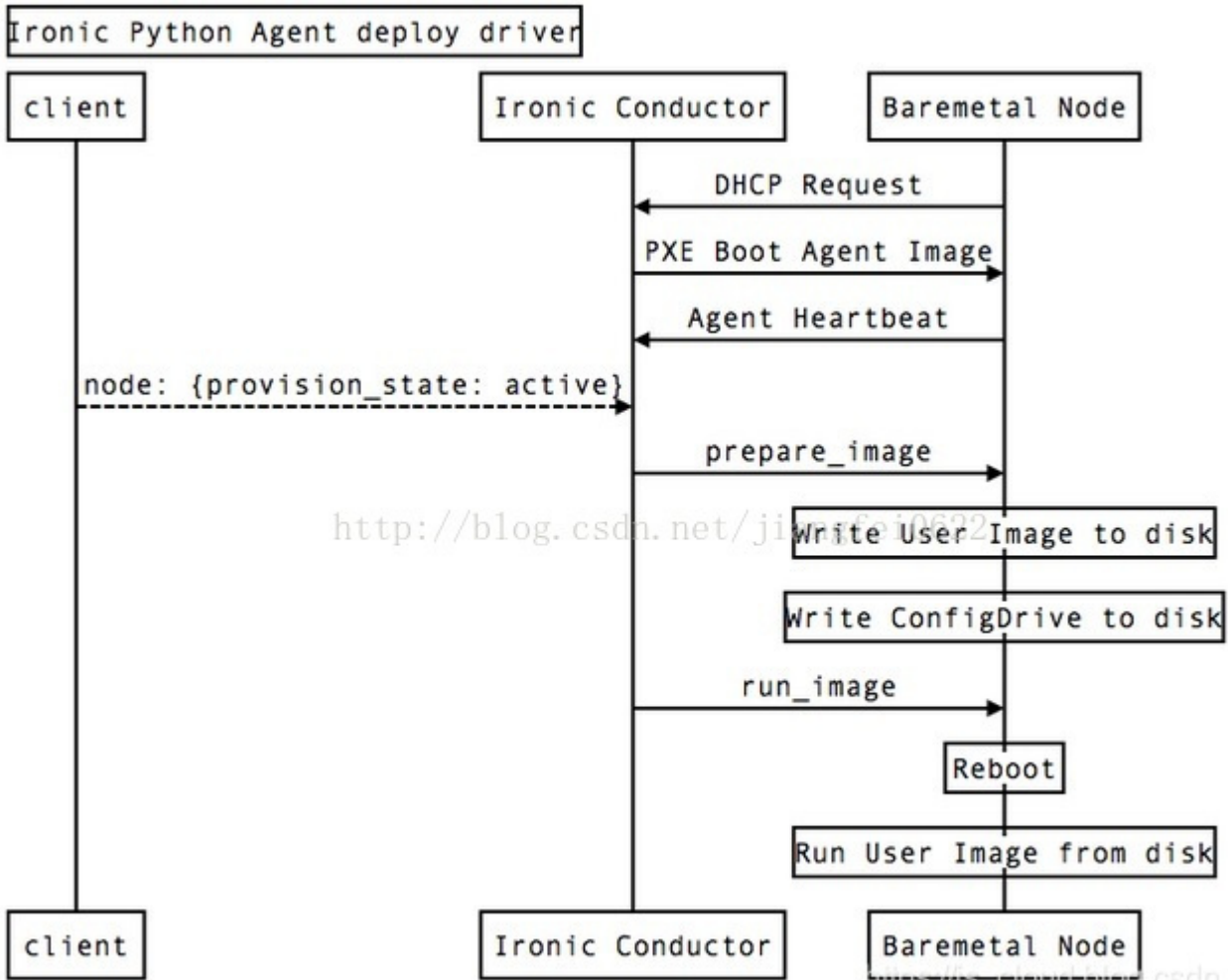
(ironic-api RPC Heartbeat

), ironic-conductor가 IPA prepare_image , ironic-conductor가 IPA

Heartbeat prepare_image

가

IPA



- <https://www.cnblogs.com/jmilkfan-fanguiju/p/11825062.html>

From: <https://atl.kr/dokuwiki/> - AllThatLinux!
Permanent link: https://atl.kr/dokuwiki/doku.php/ironic_%EB%B2%A0%EC%96%B4%EB%A9%94%ED%83%88_%EC%9D%B8%EC%8A%A4%ED%84%B4%EC%8A%A4%EC%9D%98_%EB%B0%B0%ED%8F%AC_%ED%94%84%EB%A1%9C%EC%84%B8%EC%8A%A4
Last update: 2024/10/11 06:32

